

Monthly Report No. 041

August 30, 2024 – September 26, 2024

KAPALAMA CONTAINER TERMINAL WHARF AND DREDGING

Job HC 10498

Honolulu Harbor, Oahu, Hawaii

Prepared for:



State of Hawaii
Department of Transportation
Harbors Division

Prepared by:



Harbors Project No. H.C. 10498

MONTHLY REPORT NO. 041

Period of August 30 – September 26, 2024
Kapalama Container Terminal Wharf and Dredging
Honolulu Harbor, Oahu, Job HC 10498
State of Hawaii, Department of Transportation, Harbors Division
Contract No. 69245

A. PROJECT SUMMARY

Project:	Kapalama Container Terminal Wharf and Dredging
Project Number	HC 10498
Location	Honolulu Harbor, Oahu
Owner	State of Hawaii Department of Transportation; Harbors Division
Design Consultant	Moffatt and Nichol
General Contractor	Kiewit Infrastructure West Co.
Construction Manager	Yogi Kwong Engineers, LLC
Notice to Proceed Date	January 4, 2021
Contract Completion Date	April 4, 2024 (To Be Amended) July 31, 2025 (Pending New Contract Amendment)

B. CURRENT PROJECT SCHEDULE – ALL DATES SUBJECT TO CHANGE WITHOUT NOTICE (See next page)

MAJOR ACTIVITY:	COMPLETION DATES AS OF KIWC May 2024 SCHEDULE:					DD-MON-YYYY: ACTUAL COMPLETION DATE (Month Year) = Anticipated Completion Date** [NOTE: <u>ALL</u> ANTICIPATED DATES ARE SUBJECT TO CHANGE WITHOUT NOTICE]
	PIER 41	PIER 42	SNUG HARBOR	PIER 43	HC 10502 (Ph 1)	
HDD Submarine Water Line - Completed	N/A	N/A	N/A	21-July-2023	N/A	
<i>Mass Grading</i>	13-May-2021	06-July-2021	N/A	8-Aug-2023	N/A	
Landside Demolition - Completed	13-April-2021	27-April-2021	N/A	16-Feb-2022	N/A	
In-Water Demolition - Completed	29-Oct-2021	N/A	19-Nov-2021	N/A	N/A	
<i>Stone Columns (Pre-drill)</i>	06-Oct-2021	5-Aug-2021	6-July-2022	31-Aug-2023	N/A	
<i>Stone Columns (Installation)</i>	14-Oct-2021	12-Aug-2021	6-July-2022	01-Sept-2023	N/A	
<i>Combi-Wall (Pre-Drill)</i>	29-Oct-2021	17-Dec-2021	29-Sept 2022	22-Sept-2023	N/A	
<i>Combi-Wall (Installation)</i>	28-Sept-2022	28-April-2023	4-Nov-2022	01-Dec-2023	N/A	
<i>Surcharge Period</i>	28-April-2023	N/A	(January 2025)	N/A	N/A	
<i>Tie Rods</i>	25-April-2023	16-April-2024	(November 2024)	(October 2024)	N/A	
Capping Beam	(May 2024)	(June 2024)	(July 2024)	(October 2024)	N/A	
<i>Tie Rod Deadman</i>	22-Dec-2022	N/A	N/A	N/A	N/A	
Land Side Crane Rail Beam	N/A	(February 2025)	8-Aug-2023	(July 2024)	N/A	
<i>Water & Electrical Utilities</i>	(June 2024)	(April 2025)	(March 2025)	(November 2024)	N/A	
<i>Drainage Structures</i>	(July 2024)	(March 2025)	(February 2025)	(August 2024)	N/A	
Water Side Crane Rail Beam	N/A	(April 2025)	(October 2024)	(February 2025)	N/A	
<i>Concrete Tie-Beam</i>	N/A	(March 2025)	(January 2025)	(March 2025)	N/A	
Crane Rails Installed	N/A	(March 2025)	(May 2025)	(June 2025)	N/A	
Crane Substation Switchgear & Transformer Delivered to KCT	N/A	29-Sept-2023 [Transformer] 5-Jan-2024 [Switchgear]	N/A	N/A	N/A	
Crane Substation	N/A	(May 2025)	N/A	N/A	N/A	
Dredging [at bulkhead wall]	31-Jan-2024	28-Mar-2024	(February 2025)	(February 2025)	N/A	
Dredging [offshore]	9-Jan-2024	(July 2024)	(January 2025)	(November 2024)	N/A	
Fenders Installed	(August 2024)	(June 2025)	(June 2025)	(July 2025)	N/A	
PCC Pavement	(November 2024)	(May 2025)	(May 2025)	(June 2025)	(June 2024)	
<i>Cathodic Protection</i>	(December 2024)	(June 2025)	(May 2025)	(July 2025)	N/A	
<i>Pavement Striping</i>	(December 2024)	(June 2025)	(May 2025)	(July 2025)	(August 2024)	
TWIC Fencing	N/A	N/A	N/A	(July 2025)	(August 2024)	
PROJECT COMPLETION	(JULY 31, 2025)					

MONTHLY REPORT NO. 041

Period of August 30 – September 26, 2024
Kapalama Container Terminal Wharf and Dredging
Honolulu Harbor, Oahu, Job HC 10498
State of Hawaii, Department of Transportation, Harbors Division
Contract No. 69245

C. ACTIVITIES

Work observed at Pier 40F:

- KIWC poured concrete for the storm drain headwall.

Work observed at Pier 41:

- Alcal applied the first of water proofing for the drain inlet.
- KIWC civil backfilled, compacted, and tested the fill placement for the Trench Drain 3.
- KIWC civil crew commenced excavating the trench for the 36" RCP installation.
- KIWC civil crew constructed earthen berm for the trench drain from STA 26+00 to STA 27+00.
- KIWC mason crew conducted concrete finishing of P8 of TD 3.

Work Observed at Pier 42:

- HRSPI continued installation for the WSCR B A1-A3 (Sta 15+75 to 18+55).
- KIWC Bridge and Marine used the DB Seattle to dredge between STA 15+00 and 18+00.
- KIWC carpentry and mason crews placed mud mat for TD2 from STA 6+35 to STA 6+93.
- KIWC civil crew placed #2-course of TD 2 at STA 6+35 to STA 6+93
- PECL crew installed the PVC conduits for PBE9 and PBC9.
- PF crew conducted soil mixing north of the 48-inch CIDH piers of the junction structure.

Work Observed at Pier 43:

- Foundation crew poured concrete for CIDH #17-A2-36.
- HRSPI crew installed the rebar cage for CWCB (STA 1+19.30 to STA 2+11.84).
- KIWC and HRSPI installed formwork and rebar for LSCR B pours #23 and 24 (Sta 0+18 to 2+11).
- KIWC carpentry crew stripped the forms from P7 of the LSCR B (Sta 1+16 to 2+07).
- KIWC continued installation of P23/P24 of the cap beam (Sta 0+18 to 2+11).
- KIWC continued installation of tie rods for P7 of the LSCR B (Sta 1+16 to 2+07).
- KIWC finished drilling locations 21-A2-36, 24-A2-36, and 27-A2-36.
- KIWC installed CIDH shafts 27-A2-36, 30-A2-36, and 33-A2-36.
- KIWC installed shaft 15-A2s-36.
- KIWC installed shaft 6-A2s-36.
- KIWC poured CIDH locations 12-A2-36 and 14-A2-36.
- KIWC poured CIDH locations 21-A2-36 and 24-A2-36.
- KIWC poured CIDH shafts 25-A2-36 and 22-A2-36.
- KIWC poured CWCB pour #23 (Sta 1+19 to 2+11).
- KIWC poured LSCR B pour #8 (Sta 0+32 to 1+16).
- KIWC poured shaft CIDH #19-A2-36.

Work Observed at Snug Harbor:

- KIWC continued shaft top prep for the WSCR B from Sta. 9+50 to 10+50.
- KIWC poured CIDH location 10-A2s-36.
- KIWC poured CIDH location 13-A2s-36.
- KIWC poured CIDH shaft 4-A2s-36.
- KIWC poured CIDH shaft 8-A2s-36.
- KIWC poured CIDH shaft 9-A2s-36.
- KIWC poured CIDH shaft 9-A2s-36.
- KIWC poured CIDH shafts 3-A2s-36 and 37-A2-36.

Work Observed at PCCP:

- Asphaltic Concrete (AC) paving at Amazon block out

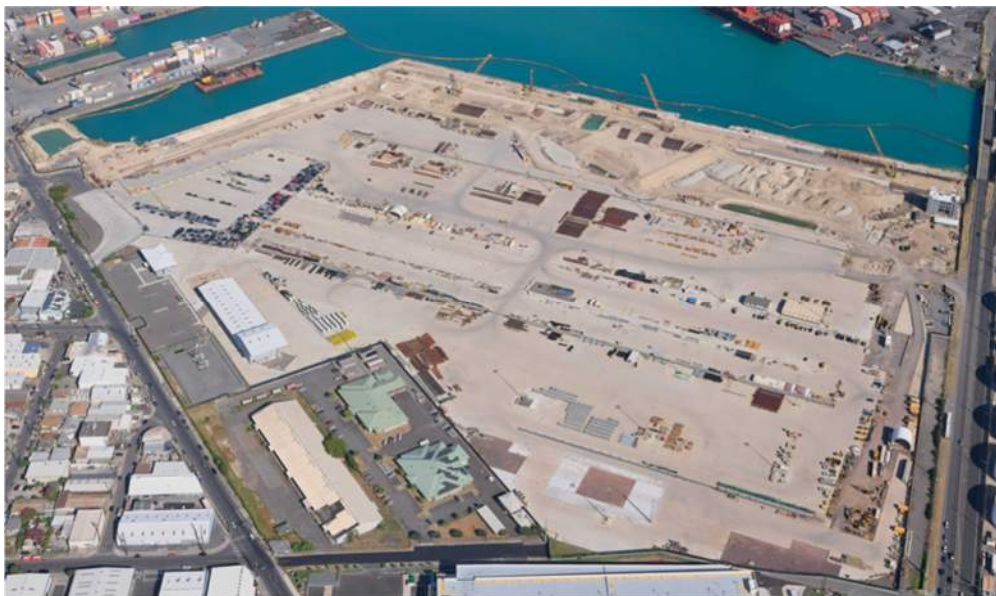
MONTHLY REPORT NO. 041

Period of August 30 – September 26, 2024
Kapalama Container Terminal Wharf and Dredging
Honolulu Harbor, Oahu, Job HC 10498
State of Hawaii, Department of Transportation, Harbors Division
Contract No. 69245

D. AERIAL PHOTOGRAPH



April 2024



July 2024

E. PROJECT PHOTOGRAPHS (See attached Sheets)

H.C. 10498 KAPALAMA CONTAINER TERMINAL YARD WHARF AND DREDGING
MONTHLY REPORT NO. 041
AUGUST 30 TO SEPTEMBER 26, 2024



KIWC setting formwork for LSCRB pour #8.



Pier 40F: The crew used concrete vibrators to consolidate the concrete pour



PF continued predrilling in the junction structure soil mixing area on Pier 42



Pier 42: KIWC civil crew placed #2-course gravel in "burrito" wrap for the TD 2 mud mat pour between STA 6+35 and STA 6+93



KIWC backfilling the tie rod trench extensions with 3b.



View of the open tie rod trenches for P7 of the LSCRB on Pier 43

H.C. 10498 KAPALAMA CONTAINER TERMINAL YARD WHARF AND DREDGING
MONTHLY REPORT NO. 041
AUGUST 30 TO SEPTEMBER 26, 2024



Pier 43: KIWC civil crew fine grading the subgrade surrounding the water manholes (WL - 1 and 2)



Pier 41: KIWC civil crew constructed earthen berm from STA 26+00 to STA 27+00 east of the trench drain 3



Pier 43: HRSPI and KIWC carpentry crews installed the rebar cage of P23 of CWCB



Pier 43: KIWC foundation crew installed six (6) of the 9-inch long PVC shoe for the rebar cage of CIDH #7-A2S-36



Pier 42: KIWC Bridge and Marine crew used the DB Seattle to dredge between STA 16+00 to STA 18+00



Pier 43: KIWC foundation crew pulled 17-meters of casings from CIDH #7-A2S-36

H.C. 10498 KAPALAMA CONTAINER TERMINAL YARD WHARF AND DREDGING
 MONTHLY REPORT NO. 041
 AUGUST 30 TO SEPTEMBER 26, 2024



Pier 42: PECL crew placed the #3B fine gravel surrounding the electrical manholes



Pier 42: PECL crew able to dewater the trench excavation at 1419 hours. The bottom was measured at 10.0' bgs



KIWC performing shaft top prep at approximately Sta. 10+50



Pier 42: HRSPI crew continued installing the rebar cage for A1 of the WSCRb from approximate STA 17+00 to STA 19+00



KIWC installing formwork for the bulkhead between capping beam pours #23 and 24.



MPE testing truck 1 for the CIDH pour

H.C. 10498 KAPALAMA CONTAINER TERMINAL YARD WHARF AND DREDGING
MONTHLY REPORT NO. 041
AUGUST 30 TO SEPTEMBER 26, 2024



KIWC setting formwork for the bulkhead between capping beam pours #23 and 24.



Pier 42: Junction Structure - PF continued to pre-drill the area south of the 48-inch CIDH piers



Progress setting the WSCR reinforcement on Pier 42



Pier 41: KIWC civil crew (Micah's) installed the geofilter fabric for stabilization layer for the 36-inch RCP installation



Pier 42: The carpentry crew (Kaimi's) installed the expansion board from STA 16+00 to approximately STA 13+00 of the WSCR



PF continued soil mixing at the junction structure area

H.C. 10498 KAPALAMA CONTAINER TERMINAL YARD WHARF AND DREDGING
MONTHLY REPORT NO. 041
AUGUST 30 TO SEPTEMBER 26, 2024



Pier 42: KIWC DB Seattle continued in-water dredging from STA 15+50 to STA 14+50



Pier 42: PECL crew used the excavator's bucket to probe the bottom of the excavation per instruction from Geolabs



KIWC departing from the site



View of spoils from CIDH shaft 28-A2-36.



KIWC setting chamfers for the CWCB pour #23 formwork.



KIWC setting the shore power vault in CWCB pour #23.

H.C. 10498 KAPALAMA CONTAINER TERMINAL YARD WHARF AND DREDGING
MONTHLY REPORT NO. 041
AUGUST 30 TO SEPTEMBER 26, 2024



KIWC performed cleanout of the CIDH locations to be poured this shift



View of the marine bollards in CWCB pour #23.



KIWC installed the remaining formwork for the mud mat of the WSCR on Pier 42



Pier 42: KIWC DB Seattle continued in water dredging from STA 15+00 to STA 14+00



KIWC installing anchors for the oil boom in CWCB pour #23.



KIWC grading the base course around the water manholes on Pier 43

H.C. 10498 KAPALAMA CONTAINER TERMINAL YARD WHARF AND DREDGING
MONTHLY REPORT NO. 041
AUGUST 30 TO SEPTEMBER 26, 2024



Pier 42: KIWC DB Seattle continued in water dredging from STA 15+00 to STA 14+00



View of the blackout for the safety ladder in CWCB pour #23.



KIWC installing formwork for CWCB pour #24.



KIWC pouring the mud mat for the cable drum vault for the WSCR on Pier 42



PCCP: Amazon Block out - KIWC surveyor verified the elevation of the manholes were out of plumb



MPE performing compaction testing for the "south lane" of the water manhole blackout on Pier 43

H.C. 10498 KAPALAMA CONTAINER TERMINAL YARD WHARF AND DREDGING
MONTHLY REPORT NO. 041
AUGUST 30 TO SEPTEMBER 26, 2024



Pier 42: KIWC DB Seattle continued in water dredging from STA 15+00 to 14+00



PCCP: Amazon block out - KIWC civil crew grouted the manhole riser of the communication manhole



PF soil mixing for the junction structure excavation.



Pier 43: KIWCcivil crew excavated the subgrade between P15 and P16 of the CWCB for the mud mat installation



Pier 43: Dredged stockpile - Civil crew used the CAT 336 excavator to screen the dredge material



Pier 41: KIWC mason crew continued concrete finishing of the walls of P8 of the TD 3

H.C. 10498 KAPALAMA CONTAINER TERMINAL YARD WHARF AND DREDGING
MONTHLY REPORT NO. 041
AUGUST 30 TO SEPTEMBER 26, 2024



PCCP: Amazon block out - RB used the CAT CB 34B double drum roller to compact the asphalt pavement



KIWC installing formwork for capping beam pour #24.



CIDH slump loss concrete on site



Pier 42: KIWC carpentry crew trimmed the polyvinyl sheet bond breaker of the WSCRB from STA 18+55 to STA 16+35



KIWC preparing for CWCB pour #23.



KIWC performing shaft top prep for the CIDH shafts at the crane power vault on Pier 42

H.C. 10498 KAPALAMA CONTAINER TERMINAL YARD WHARF AND DREDGING
MONTHLY REPORT NO. 041
AUGUST 30 TO SEPTEMBER 26, 2024



KIWC pouring concrete for CWCB pour #23.



PCCP: Amazon block out - RB crew used the Mikasa vibratory steel plate on the edges of PCCP to prevent spalling of the existing PCC



KIWC finished pouring CIDH shaft 24-A2-36



KIWC removing the bulkhead from the end of CWCB pour #23.



Pier 42: KIWC structure crew continued to install the braces for the headwall and the CJ at STA 17+60



KIWC setting the rebar cage for the CIDH installations on Pier 43