

Monthly Report No. 040

August 2, 2024 – August 29, 2024

KAPALAMA CONTAINER TERMINAL WHARF AND DREDGING

Job HC 10498

Honolulu Harbor, Oahu, Hawaii

Prepared for:



State of Hawaii
Department of Transportation
Harbors Division

Prepared by:



Harbors Project No. H.C. 10498

MONTHLY REPORT NO. 040

Period of August 2 – August 29, 2024

Kapalama Container Terminal Wharf and Dredging

Honolulu Harbor, Oahu, Job HC 10498

State of Hawaii, Department of Transportation, Harbors Division

Contract No. 69245

A. PROJECT SUMMARY

Project:	Kapalama Container Terminal Wharf and Dredging
Project Number	HC 10498
Location	Honolulu Harbor, Oahu
Owner	State of Hawaii Department of Transportation; Harbors Division
Design Consultant	Moffatt and Nichol
General Contractor	Kiewit Infrastructure West Co.
Construction Manager	Yogi Kwong Engineers, LLC
Notice to Proceed Date	January 4, 2021
Contract Completion Date	April 4, 2024 (To Be Amended) July 31, 2025 (Pending New Contract Amendment)

B. CURRENT PROJECT SCHEDULE – ALL DATES SUBJECT TO CHANGE WITHOUT NOTICE

(See next page)

MAJOR ACTIVITY:	COMPLETION DATES AS OF KIWC May 2024 SCHEDULE:					DD-MON-YYYY: ACTUAL COMPLETION DATE (Month Year) = Anticipated Completion Date** [NOTE: <u>ALL</u> ANTICIPATED DATES ARE SUBJECT TO CHANGE WITHOUT NOTICE]
	PIER 41	PIER 42	SNUG HARBOR	PIER 43	HC 10502 (Ph 1)	
HDD Submarine Water Line - Completed	N/A	N/A	N/A	21-July-2023	N/A	
<i>Mass Grading</i>	13-May-2021	06-July-2021	N/A	8-Aug-2023	N/A	
Landside Demolition - Completed	13-April-2021	27-April-2021	N/A	16-Feb-2022	N/A	
In-Water Demolition - Completed	29-Oct-2021	N/A	19-Nov-2021	N/A	N/A	
<i>Stone Columns (Pre-drill)</i>	06-Oct-2021	5-Aug-2021	6-July-2022	31-Aug-2023	N/A	
<i>Stone Columns (Installation)</i>	14-Oct-2021	12-Aug-2021	6-July-2022	01-Sept-2023	N/A	
<i>Combi-Wall (Pre-Drill)</i>	29-Oct-2021	17-Dec-2021	29-Sept 2022	22-Sept-2023	N/A	
<i>Combi-Wall (Installation)</i>	28-Sept-2022	28-April-2023	4-Nov-2022	01-Dec-2023	N/A	
<i>Surcharge Period</i>	28-April-2023	N/A	(January 2025)	N/A	N/A	
<i>Tie Rods</i>	25-April-2023	16-April-2024	(November 2024)	(October 2024)	N/A	
Capping Beam	(May 2024)	(June 2024)	(July 2024)	(October 2024)	N/A	
<i>Tie Rod Deadman</i>	22-Dec-2022	N/A	N/A	N/A	N/A	
Land Side Crane Rail Beam	N/A	(February 2025)	8-Aug-2023	(July 2024)	N/A	
<i>Water & Electrical Utilities</i>	(June 2024)	(April 2025)	(March 2025)	(November 2024)	N/A	
<i>Drainage Structures</i>	(July 2024)	(March 2025)	(February 2025)	(August 2024)	N/A	
Water Side Crane Rail Beam	N/A	(April 2025)	(October 2024)	(February 2025)	N/A	
<i>Concrete Tie-Beam</i>	N/A	(March 2025)	(January 2025)	(March 2025)	N/A	
Crane Rails Installed	N/A	(March 2025)	(May 2025)	(June 2025)	N/A	
Crane Substation Switchgear & Transformer Delivered to KCT	N/A	29-Sept-2023 [Transformer] 5-Jan-2024 [Switchgear]	N/A	N/A	N/A	
Crane Substation	N/A	(May 2025)	N/A	N/A	N/A	
Dredging [at bulkhead wall]	31-Jan-2024	28-Mar-2024	(February 2025)	(February 2025)	N/A	
Dredging [offshore]	9-Jan-2024	(July 2024)	(January 2025)	(November 2024)	N/A	
Fenders Installed	(August 2024)	(June 2025)	(June 2025)	(July 2025)	N/A	
PCC Pavement	(November 2024)	(May 2025)	(May 2025)	(June 2025)	(June 2024)	
<i>Cathodic Protection</i>	(December 2024)	(June 2025)	(May 2025)	(July 2025)	N/A	
<i>Pavement Striping</i>	(December 2024)	(June 2025)	(May 2025)	(July 2025)	(August 2024)	
TWIC Fencing	N/A	N/A	N/A	(July 2025)	(August 2024)	
PROJECT COMPLETION	(JULY 31, 2025)					

MONTHLY REPORT NO. 040

Period of August 2 – August 29, 2024

Kapalama Container Terminal Wharf and Dredging

Honolulu Harbor, Oahu, Job HC 10498

State of Hawaii, Department of Transportation, Harbors Division

Contract No. 69245

C. ACTIVITIES

Work observed at Pier 40F:

- KIWC carpentry crew stripped the forms of the storm drain head wall.

Work observed at Pier 41:

- KIWC adjusted the formwork for the TD-3 inlet pour.

Work Observed at Pier 42:

- KIWC foundations crew poured shaft 5-A3S-36.
- KIWC masons continued to grout the CSL tubes.
- KIWC poured shaft 11-A3S-36.
- KIWC poured shaft 8-A3S-36.
- PF continued predrilling in the junction structure area in preparation for starting test areas for soil mixing.
- KIWC installed 2 Coarse and geogrid and closed the burrito wrap for stabilized layer for TD-2.
- KIWC poured CIDH shaft 12-A2S-36.
- KIWC poured CIDH shafts 17-A2s-36 and 11-A2s-36.
- KIWC poured CIDH shafts 2-A4-36, 40-A3-36, and 37-A3-36.
- KIWC poured shaft 1-A3S-36.
- KIWC started installation of MH-5A.
- Paul's Electric excavated the conduit trench to PBH8 and PBE8.

Work Observed at Pier 43:

- HRSP installed rebar for capping beam pour #7 and 8 (Sta 0+32 to 2+07).
- KIWC started excavation for the tie rod installation for P23 of the cap beam.
- KIWC and HRSPI installed formwork and rebar for LSCR B pour #7 (Sta 1+16 to 2+07).
- KIWC and HRSPI installed rebar and formwork for LSCR B pours #7 and 8 (Sta 0+32 to 2+06).
- KIWC continued dry finishing the waterside of P22 of the cap beam (Sta 2+12 to 2+88).
- KIWC drilled CIDH locations 17-A2s-36 and 11-A2s-36.
- KIWC graded around the WL-1&2 manholes and LP-3C.
- KIWC installed tie rods between LSCR B pour #7 and the combi wall (Sta 1+16 to 2+07).
- KIWC mason crew installed the expansion board on the capping beam.
- KIWC poured CIDH shafts 10-A3s-36 and 6-A3s-36.
- KIWC poured concrete for the WL-1 manhole cover.
- KIWC poured LSCR B pour #7 (Sta 1+16 to 2+07).
- KIWC poured shaft 9-A3s-36.

Work Observed at Snug Harbor:

- KIWC poured CIDH shafts 18-A2S-36 and 14-A2S-36.
- KIWC continued pouring CIDH shaft 2-A3s-36.
- KIWC installed CIDH shaft 3-A3s-36.
- KIWC poured CIDH shaft 7-A3s-36.

Work Observed at PCCP:

- KIWC civil crew installed the geogrid over the PASHA maintenance block out.

MONTHLY REPORT NO. 040

Period of August 2 – August 29, 2024

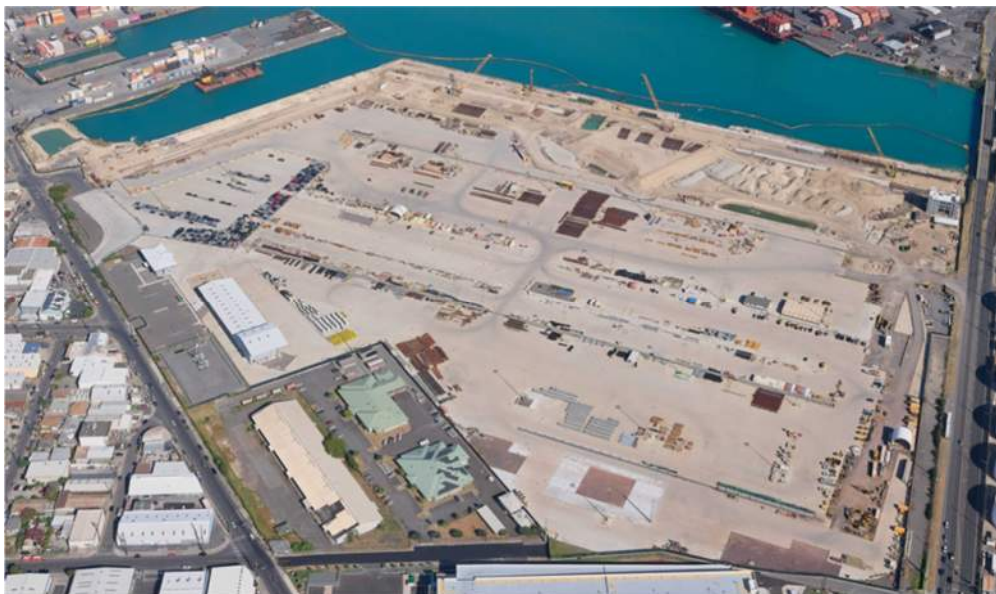
Kapalama Container Terminal Wharf and Dredging
Honolulu Harbor, Oahu, Job HC 10498

State of Hawaii, Department of Transportation, Harbors Division
Contract No. 69245

D. AERIAL PHOTOGRAPH



April 2024



July 2024

E. PROJECT PHOTOGRAPHS

(See attached Sheets)

H.C. 10498 KAPALAMA CONTAINER TERMINAL YARD WHARF AND DREDGING
MONTHLY REPORT NO. 040
AUGUST 2 TO AUGUST 29, 2024



KIWC installing formwork for bulkhead between LSCRB pours #7 and 8.



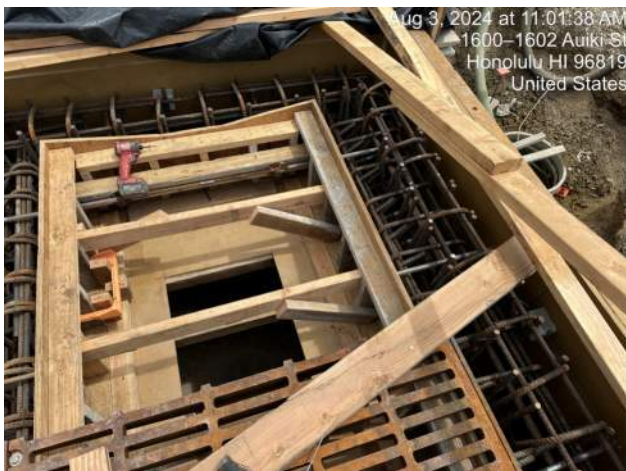
Pier 41: KIWC carpentry crew (Philip's) installed the frames and grates of P1 to P3 of trench drain 3



KIWC installing formwork for bulkhead between LSCRB pours #7 and 8.



KIWC prepped to pour CLSM around the sewer cleanout pipe in the Pasha Maintenance Building blockout



View of the drain inlet reinforcement for TD-3



KIWC performing the dry finish for the waterside of the cap beam on P22

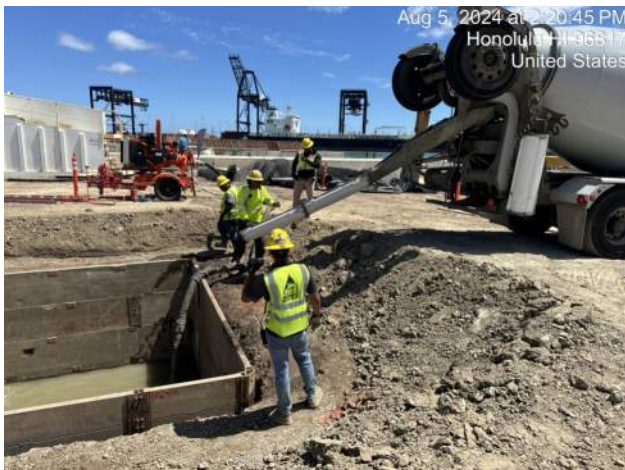
H.C. 10498 KAPALAMA CONTAINER TERMINAL YARD WHARF AND DREDGING
MONTHLY REPORT NO. 040
AUGUST 2 TO AUGUST 29, 2024



PCCP: PASHA maintenance blockout- Road Builders crew sprayed SS-1 asphalt emulsion on the sides of the PCCP



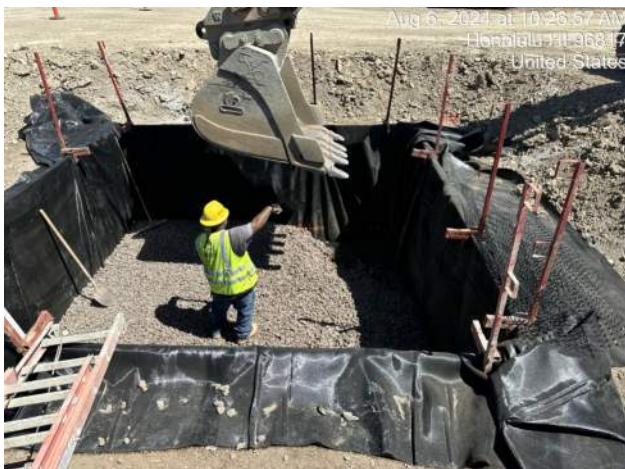
View of the excavation for MH-5A on Pier 42



KIWC pouring CLSM around the perimeter of the trench box for MH-5A on Pier 42



PCCP: HRSPI crew fabricating rebar cage for the tie beams



KIWC installing the second layer of 2 course material for the stabilized layer of MH-5A



Pier 41: KIWC mason crew sprayed the concrete waxy compound for concrete curing

H.C. 10498 KAPALAMA CONTAINER TERMINAL YARD WHARF AND DREDGING
MONTHLY REPORT NO. 040
AUGUST 2 TO AUGUST 29, 2024



PCCP: PASHA maintenance block out -Fron of the paver the temperature was measured at 313.0 deg F.



PF drilling for soil mixing around CIDH shafts.



PCCP: PASHA maintenance block out - HMA paving completed at 1430 hours, crew cleaning up.



PF predrilling near the installed 48" CIDH shafts in the junction structure SOE area



Pier 40F: KIWC carpentry crew continued to install the Sika 701 water stop in the keyway of the storm drain headwall



Pier 43: KIWC mason crew applied concrete curing compound for the water manhole WL-1 concrete pour

H.C. 10498 KAPALAMA CONTAINER TERMINAL YARD WHARF AND DREDGING
MONTHLY REPORT NO. 040
AUGUST 2 TO AUGUST 29, 2024



Pier 40F: HRSPI crew cut the end of the rebar to accommodate 3-inch clearance per MN structural observations Photo #1



PCCP: HRSPI crew continued to fabricate the tie beam rebar cages



HRSPI installing rebar for LSCRB pour #8.



KIWC cleaning out shaft 14-A2S-36.



HRSPI installing rebar for LSCRB pour #8.



KIWC pouring concrete into CIDH shaft 18-A2S-36.

H.C. 10498 KAPALAMA CONTAINER TERMINAL YARD WHARF AND DREDGING
MONTHLY REPORT NO. 040
AUGUST 2 TO AUGUST 29, 2024



View of form savers for Tie beam dowels embedded in LSCRB pour #7.



KIWC backfilling on the landside of capping beam pours #21 and 22.



KIWC pouring shaft 11-A3S-36



Pier 40F: HL crew surveyed the top elevation of the footing foundation of the storm drain head wall



KIWC setting tie rods in the tie rod trenches between the LSCRB and the combi wall.



KIWC backfilling lift 3 of the cap beam from P19 to P21

H.C. 10498 KAPALAMA CONTAINER TERMINAL YARD WHARF AND DREDGING
MONTHLY REPORT NO. 040
AUGUST 2 TO AUGUST 29, 2024



Pier 42: KIWC civil crew continued to chip the concrete over pour over the 36-inch CIDH piers



View of typical rebar cage for CIDH while hole is being cleaned out by drill rig



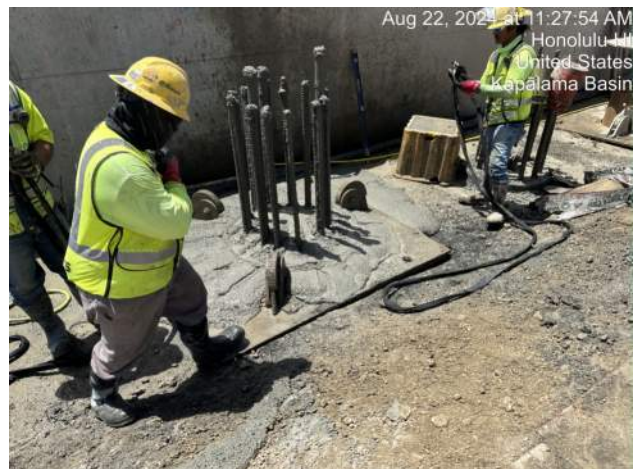
View of tie rod couplers on waterside of P8



PCCP: Lay down area - HRSPI crew pre-fabricating the steel rebar cage for the trench drain (TD2)



Pier 42: PFoundation started to drill the area surrounding the existing 48-inch CIDH pier



View of shaft 9-A3s-36

H.C. 10498 KAPALAMA CONTAINER TERMINAL YARD WHARF AND DREDGING
MONTHLY REPORT NO. 040
AUGUST 2 TO AUGUST 29, 2024



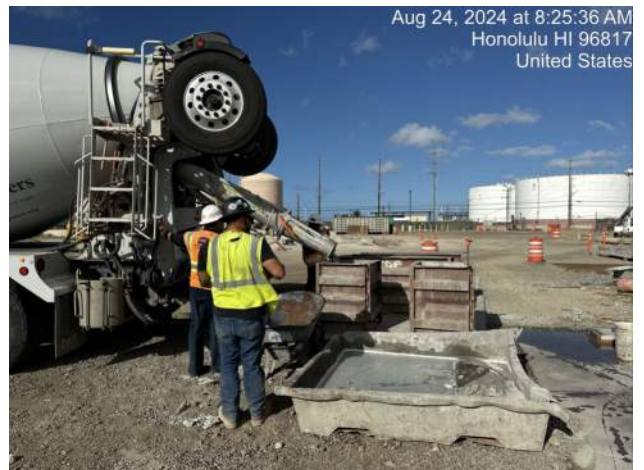
Pier 42: PECL crew grading and leveling the S4C sand for installation of the manhole bases



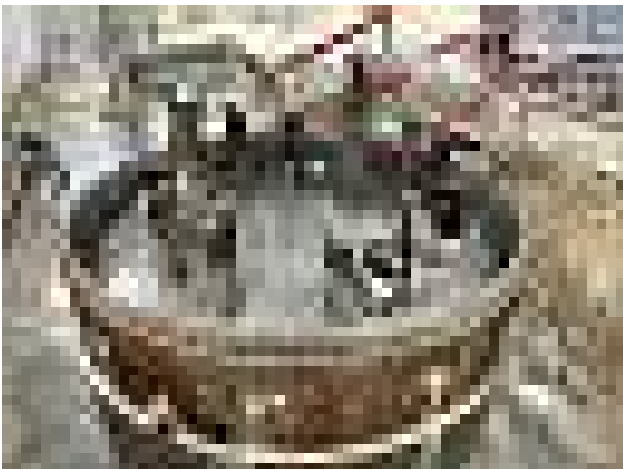
KIWC prepping to probe the outside of the cap beam on Pier 43



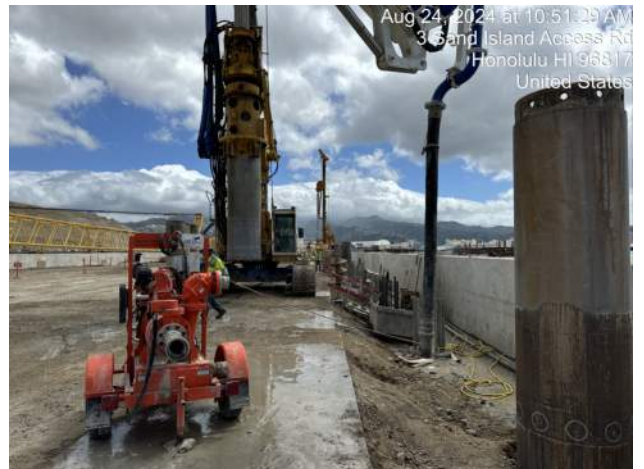
MPE testing lift 2 over the tie rod backfill area on Pier 43



MPE testing truck 1 of the CIDH concrete pour



KIWC filled to top of casing for CIDH location 16-A2s-36 after removing first set of casing mid pour



KIWC removed the final 6th (3m) casing

H.C. 10498 KAPALAMA CONTAINER TERMINAL YARD WHARF AND DREDGING
MONTHLY REPORT NO. 040
AUGUST 2 TO AUGUST 29, 2024



Pier 42: PECL installed the electrical electric grounding rod in PBC9 and PBE9



Pier 40F: Pre-pour headwall inspection found one dobie block top of the footing foundation



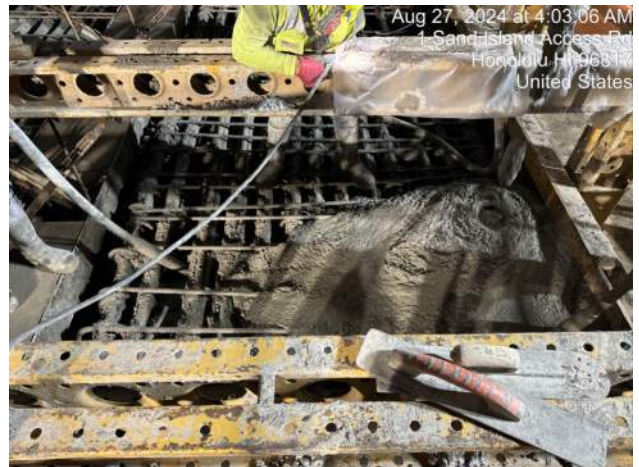
Pier 41: PECL crew unloaded the manhole base



Pier 40F: KIWC carpentry crew continued to finalized the installation of the upper headwall forms



Pier 42: KIWC mason crew installed the "Deck - O- Form" expansion board



KIWC starting to top off P7 of the LSCRB on Pier 43

H.C. 10498 KAPALAMA CONTAINER TERMINAL YARD WHARF AND DREDGING
MONTHLY REPORT NO. 040
AUGUST 2 TO AUGUST 29, 2024



Pier 41: KIWC civil crew hauled the processed dredged material into Snug Harbor surcharge fill



KIWC setting filter fabric in the tie rod trenches on pier 43.



Pier 42: KIWC mason crew continued to install the expansion board of the WSCR



Pier 42: KIWC carpentry crew (Philip's) installed the PVC polyvinyl sheet bond breaker from STA 16+00 to STA 15+70



KIWC wrapping tie rods embedded in LSCR pour #7 with tape.



KIWC starting to pour CIDH shaft 15-A2s-36