

# Monthly Report No. 035

February 29, 2023 – March 28, 2024

## KAPALAMA CONTAINER TERMINAL WHARF AND DREDGING

Job HC 10498

Honolulu Harbor, Oahu, Hawaii

Prepared for:



State of Hawaii  
Department of Transportation  
Harbors Division

Prepared by:



Harbors Project No. H.C. 10498

---

## MONTHLY REPORT NO. 035

Period of February 29 – March 28, 2024

Kapalama Container Terminal Wharf and Dredging

Honolulu Harbor, Oahu, Job HC 10498

State of Hawaii, Department of Transportation, Harbors Division

Contract No. 69245

---

### A. PROJECT SUMMARY

Project:	Kapalama Container Terminal Wharf and Dredging
Project Number	HC 10498
Location	Honolulu Harbor, Oahu
Owner	State of Hawaii Department of Transportation; Harbors Division
Design Consultant	Moffatt and Nichol
General Contractor	Kiewit Infrastructure West Co.
Construction Manager	Yogi Kwong Engineers, LLC
Notice to Proceed Date	January 4, 2021
Contract Completion Date	<del>April 4, 2024</del> (To Be Amended) July 31, 2025 (Pending New Contract Amendment)

### B. CURRENT PROJECT SCHEDULE – ALL DATES SUBJECT TO CHANGE WITHOUT NOTICE (See next page)

MAJOR ACTIVITY:		COMPLETION DATES AS OF KIWC FEBRUARY 2024 SCHEDULE: <div>             DD-MON-YYYY: ACTUAL COMPLETION DATE              (Month Year) = Anticipated Completion Date**              [NOTE: <b>ALL</b> ANTICIPATED DATES ARE              SUBJECT TO CHANGE WITHOUT NOTICE]           </div>				
		PIER 41	PIER 42	SNUG HARBOR	PIER 43	HC 10502 (Ph 1)
HDD Submarine Water Line - Completed		N/A	N/A	N/A	21-July-2023	N/A
<i>Mass Grading</i>		13-May-2021	06-July-2021	N/A	8-Aug-2023	N/A
Landside Demolition - Completed		13-April-2021	27-April-2021	N/A	16-Feb-2022	N/A
In-Water Demolition - Completed		29-Oct-2021	N/A	19-Nov-2021	N/A	N/A
<i>Stone Columns (Pre-drill)</i>		06-Oct-2021	5-Aug-2021	6-July-2022	31-Aug-2023	N/A
<i>Stone Columns (Installation)</i>		14-Oct-2021	12-Aug-2021	6-July-2022	01-Sept-2023	N/A
<i>Combi-Wall (Pre-Drill)</i>		29-Oct-2021	17-Dec-2021	29-Sept 2022	22-Sept-2023	N/A
<i>Combi-Wall (Installation)</i>		28-Sept-2022	28-April-2023	4-Nov-2022	01-Dec-2023	N/A
<i>Surcharge Period</i>		28-April-2023	N/A	(November 2024)	N/A	N/A
<i>Tie Rods</i>		25-April-2023	(April 2024)	(November 2024)	(August 2024)	N/A
<b>Capping Beam</b>		<b>(April 2024)</b>	<b>(November 2024)</b>	<b>(June 2024)</b>	<b>(August 2024)</b>	N/A
<i>Tie Rod Deadman</i>		22-Dec-2022	N/A	N/A	N/A	N/A
<b>Land Side Crane Rail Beam</b>		N/A	<b>(November 2024)</b>	8-Aug-2023	<b>(April 2024)</b>	N/A
<i>Water &amp; Electrical Utilities</i>		(May 2024)	(December 2024)	(February 2025)	(August 2024)	N/A
<i>Drainage Structures</i>		(July 2024)	(February 2025)	(January 2025)	(June 2024)	N/A
<b>Water Side Crane Rail Beam</b>		N/A	<b>(December 2024)</b>	<b>(August 2024)</b>	<b>(December 2024)</b>	N/A
<i>Concrete Tie-Beam</i>		N/A	(December 2024)	<b>(November 2024)</b>	(January 2025)	N/A
<b>Crane Rails Installed</b>		N/A	<b>(February 2025)</b>	<b>(April 2025)</b>	<b>(May 2025)</b>	N/A
<b>Crane Substation Switchgear &amp; Transformer Delivered to KCT</b>		N/A	29-Sept-2023 [Transformer] 5-Jan-2024 [Switchgear]	N/A	N/A	N/A
<b>Crane Substation</b>		N/A	<b>(April 2025)</b>	N/A	N/A	N/A
<b>Dredging [at bulkhead wall]</b>		31-Jan-2024	28-Mar-2024	<b>(December 2024)</b>	<b>(December 2024)</b>	N/A
<b>Dredging [offshore]</b>		9-Jan-2024	<b>(April 2024)</b>	<b>(December 2024)</b>	<b>(September 2024)</b>	N/A
<b>Fenders Installed</b>		<b>(November 2024)</b>	<b>(May 2025)</b>	<b>(April 2025)</b>	<b>(June 2025)</b>	N/A
<b>PCC Pavement</b>		<b>(October 2024)</b>	<b>(February 2025)</b>	<b>(April 2025)</b>	<b>(April 2025)</b>	<b>(May 2024)</b>
<i>Cathodic Protection</i>		(September 2024)	(April 2025)	(April 2025)	(May 2025)	N/A
<i>Pavement Striping</i>		(November 2024)	(May 2025)	(March 2025)	(June 2025)	(December 2024)
<b>TWIC Fencing</b>		N/A	N/A	N/A	<b>(June 2025)</b>	<b>(December 2024)</b>
<b>PROJECT COMPLETION</b>		<b>(JULY 31, 2025)</b>				

---

## MONTHLY REPORT NO. 035

Period of February 29 – March 28, 2024

Kapalama Container Terminal Wharf and Dredging

Honolulu Harbor, Oahu, Job HC 10498

State of Hawaii, Department of Transportation, Harbors Division

Contract No. 69245

---

### C. ACTIVITIES

#### **Work observed at Pier 41:**

- KIWC & HRSPI installed the rebar cage for capping beam pour #1 (Sta 28+61 to Sta 28+85).
- KIWC and HRSPI continued installation of TD-3 P7B.
- KIWC continued extension of TD-3 P7 excavation from Sta. 7+50 to 8+00.
- KIWC installed the chamfers and started formwork installation for the 3.5" starter wall of P7 of TD-3 (Sta. 7+00 to 8+00).
- KIWC installed the rebar cage for TD-3 P7B from Sta. 7+00 to 8+00 and finished stripping the interior formwork from Sta. 1+00 to 6+00.
- KIWC performed landside dredging along pier 41.
- KIWC started installation of the arch fenders at Sta 28+00 to 26+00.
- KIWC started installation of the interior wooden formwork for TD-3 P6 (Sta. 6+00 to 7+00).
- KIWC stripped formwork from TD-3 pour #3 (Sta 3+00 to 4+00).

#### **Work Observed at Pier 42:**

- Concrete finished work on the ocean side wall of P14 of the CWCB.
- KIWC continued in-water dredging from Sta. 18+00 to 17+00.
- KIWC poured capping beam pour #14 (Sta 08+59 to 09+56).

#### **Work Observed at Pier 43:**

- KIWC burned tie rod and rebar penetrations and welded "U" rebar in the combi wall.
- KIWC HRSPI installed the rebar cage for capping beam pour #16 (Sta 7+03 to Sta 7+68).
- KIWC Installed rebar cage for the bollards of P15 of the CWCB.
- KIWC poured capping beam pour #15 (Sta 07+68 to 08+59).
- KIWC Welded #8 "U" rebars for the combi wall interlocks.
- Paul's Electric installed the PVC electrical conduits for the shore power vault in P17.

#### **Work Observed at Snug Harbor:**

- KIWC placed dredged material over the surcharge fill (LIFT #12) and collected soil samples.

#### **Work Observed at PCCP:**

- No work observed.



---

## MONTHLY REPORT NO. 035

Period of February 29 – March 28, 2024

Kapalama Container Terminal Wharf and Dredging

Honolulu Harbor, Oahu, Job HC 10498

State of Hawaii, Department of Transportation, Harbors Division

Contract No. 69245

---

### D. AERIAL PHOTOGRAPH



November 2023



December 2023

---

## MONTHLY REPORT NO. 035

Period of February 29 – March 28, 2024

Kapalama Container Terminal Wharf and Dredging

Honolulu Harbor, Oahu, Job HC 10498

State of Hawaii, Department of Transportation, Harbors Division

Contract No. 69245

---

E. **PROJECT PHOTOGRAPHS**  
(See attached Sheets)



H.C. 10498 KAPALAMA CONTAINER TERMINAL YARD WHARF AND DREDGING  
MONTHLY REPORT NO. 035  
FEBRUARY 29 TO MARCH 28, 2024



Pier 41: PO Deadman extension - KIWC (Sanu's) placed #3B fine gravel over "burrito" wrapped tie rods



Pier 42: KIWC civil crew continued to work on the water line in the water vault of P14 (STA 8+69.51)



Snug Harbor: KIWC civil crew continued placing the dredged material on the perimeter of the surcharge fill



Snug Harbor: KIWC civil used the CAT D6 dozer to spread the fill in 12-inch loose lifts for the surcharge fill



Pier 42: The carpentry crew (Philip's) installed additional form ties and the construction joint board of P14 of the CWCB (STA 8+59.74)



Pier 43: KIWC welding crew weld the "U" rebar between the sheet pile interlock on P21 to P22 of the CWCB (STA 2+83.56 to STA 3+82.64)



H.C. 10498 KAPALAMA CONTAINER TERMINAL YARD WHARF AND DREDGING  
MONTHLY REPORT NO. 035  
FEBRUARY 29 TO MARCH 28, 2024



KIWC pouring TD-3 P2T on Pier 41



MPE performing concrete testing for truck 1 of the PCCP pours for "H1 blackout"



KIWC finished pouring the northeast blackout and starting to pour the southeast blackout of the "H1" blackout



View of the northeast blackout of the "H1" blackout"



KIWC performing method compaction for backfill lift 7 of the P0 deadman



KIWC continued in-water dredging on the corner of P41/42



H.C. 10498 KAPALAMA CONTAINER TERMINAL YARD WHARF AND DREDGING  
MONTHLY REPORT NO. 035  
FEBRUARY 29 TO MARCH 28, 2024



Mar 5, 2024 at 8:26:23 AM  
Honolulu HI 96817  
United States

KIWC continued in-water dredging on the corner of P41/42



Mar 5, 2024 at 2:12:13 PM  
1600-1602 Auiki St  
Honolulu HI 96819  
United States

KIWC compacting lift 9 of P0 of the deadman with method compaction



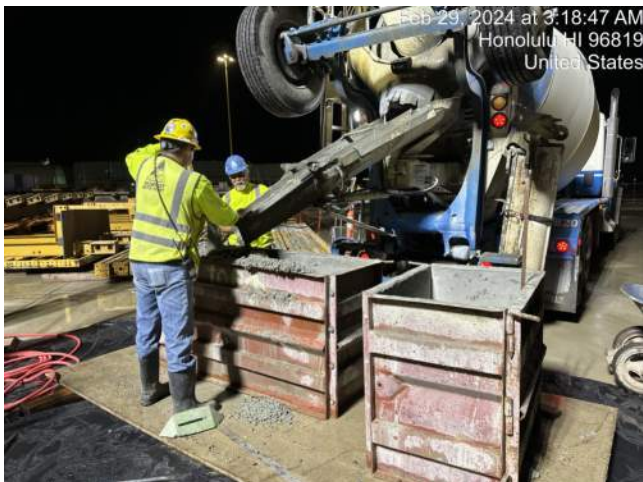
Mar 6, 2024 at 2:17:57 PM  
Honolulu HI 96817  
United States

View of the waterstop in TD-3 P5T



Mar 7, 2024 at 1:00:07 PM  
Honolulu HI 96817  
United States

View of TD-3 P5T CJ Sta. 5+00



Feb 29, 2024 at 3:18:47 AM  
Honolulu HI 96819  
United States

First truck on site for paving of the west areas of the "H1" blockouts



03/29/2024

View of mud mat formwork along the combi wall on pier 43.



H.C. 10498 KAPALAMA CONTAINER TERMINAL YARD WHARF AND DREDGING  
MONTHLY REPORT NO. 035  
FEBRUARY 29 TO MARCH 28, 2024



Pier 43: Bridge and Marine crew continued to lay out burn holes for the tie rod and rebar penetrations of P21 of the CWCB



KIWC pouring concrete for capping beam pour #14.



KIWC finishing the surface of capping beam pour #14.



KIWC spreading material over the surcharge area.



KIWC performing maintenance on dredge barge.



KIWC spreading material over the surcharge area.



H.C. 10498 KAPALAMA CONTAINER TERMINAL YARD WHARF AND DREDGING  
MONTHLY REPORT NO. 035  
FEBRUARY 29 TO MARCH 28, 2024



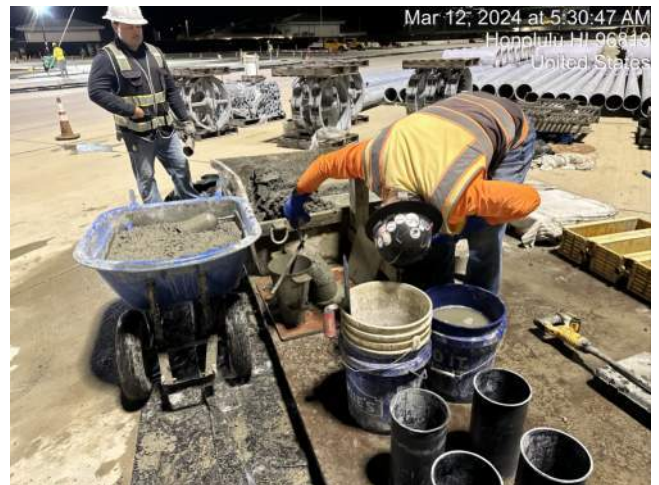
Pier 43: HRSPI crew on site to install the rebar cage for the water line top cover of WL 1 and 2



KIWC dy finishing the landside surface of the capping beam.



View of P1 of the capping beam on Pier 41



MPE testing truck 9 of the PCCP pour of the "H1 blockout"



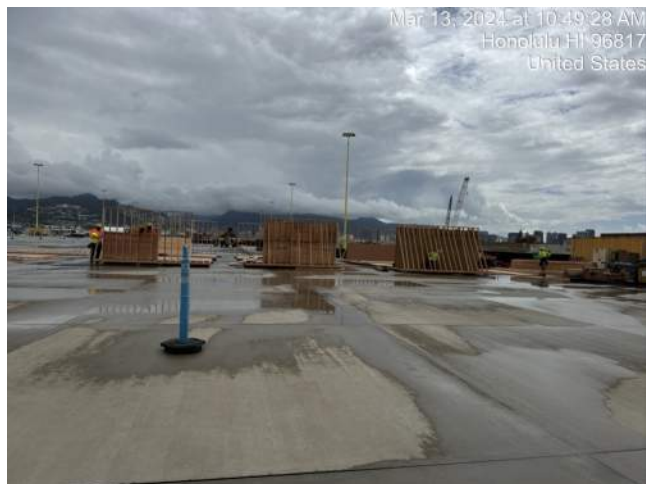
Pier 42: BOW Engineering on site to collect sea water samples between STA 16+50 and STA 17+00 outside of the silt curtain



HRSPI installing rebar for TD-3 pour #6.



H.C. 10498 KAPALAMA CONTAINER TERMINAL YARD WHARF AND DREDGING  
MONTHLY REPORT NO. 035  
FEBRUARY 29 TO MARCH 28, 2024



KIWC fabricating dredge panels on the PCCP



Snug Harbor: KIWC civil crew used the Bomag vibratory steel plate to compact the first lift of the fill placement of the MSE wall



KIWC placing material in the southeast corner of the surcharge



KIWC adjusting ladder rungs in the pour 14 water utility vault.



Snug Harbor: KIWC civil crew continued placing the dredged material for the 12th lifts over the surcharge fill



MPE performing concrete testing for the first truck of the mud mat pour of P1 of the cap beam



H.C. 10498 KAPALAMA CONTAINER TERMINAL YARD WHARF AND DREDGING  
MONTHLY REPORT NO. 035  
FEBRUARY 29 TO MARCH 28, 2024



KIWC pouring concrete into capping beam pour #14 on pier 42.



Pier 42: KIWC mason crew used broom for a textured finished of the concrete surface of P14 of the CWCB (STA 8+60 to STA 9+56)



KIWC pressure washing the combi wall at P1 of the combi wall at Pier 41



KIWC moving dredge spoils from Pier 42 to Pier 41



KIWC placing lift 6 of the eco block wall area of Snug Harbor



KIWC fabricating dredge panels on the PCCP area



H.C. 10498 KAPALAMA CONTAINER TERMINAL YARD WHARF AND DREDGING  
MONTHLY REPORT NO. 035  
FEBRUARY 29 TO MARCH 28, 2024



Snug Harbor: ESI environmental technician on site to collect soil samples from the 12th lift fill



KIWC continued in-water dredging on the corner of Pier 42



HRSPI prefabricating the rebar cage for cap beam P1 on Pier 41



Pier 42: KIWC DB Seattle continued in water dredging from STA 17+00 to 17+75



Pier 43: KIWC carpentry placed concrete mixed for the mud mat of P19 on the ocean side of the CWCB



View of TD-3 on Pier 41



H.C. 10498 KAPALAMA CONTAINER TERMINAL YARD WHARF AND DREDGING  
MONTHLY REPORT NO. 035  
FEBRUARY 29 TO MARCH 28, 2024



Pier 43: KIWC welder continued to weld the waler braces for P23 of the CWCB



KIWC removing dredge runoff from the landside of the capping beam on pier 42.



KIWC installing HP 370 fabric on the bottom of the stabilization layer for TD-3 P7



Pier 42: KIWC DB Seattle unloaded the dredged material into the CAT 730 rock truck bed



Snug Harbor: KIWC civil crew placed the 6th eco- block for the MSE constructions



View of the CJ of the landside of TD-3 at Sta 7+00



H.C. 10498 KAPALAMA CONTAINER TERMINAL YARD WHARF AND DREDGING  
MONTHLY REPORT NO. 035  
FEBRUARY 29 TO MARCH 28, 2024



Pier 43: KIWC civil crew (Sanu's) installed the Mirafi geofilter fabric over the tie rod trench excavation between P2 and P3 of the LSCRB



Pier 43: KIWC carpentry crew installed the Construction Joint of P14/P15 of the CWCB (STA 8+59.74)



Pier 43: KIWC Bridge and Marine crew continued to burn the holes for the tie rod and rebar penetrations of P17 of the CWCB (STA 6+10.74 to STA 7+03)



Pier 43: KIWC civil crew removed the muck from P17 to P22 on the ocean side of the combi wall



Pier 43 Between P2 and P3 of the LSCRB - KIWC civil crew extended the tie rod trench excavation to 15-feet long



Pier 43: MPE soil technician collected soil samples from P24 mass excavation



H.C. 10498 KAPALAMA CONTAINER TERMINAL YARD WHARF AND DREDGING  
MONTHLY REPORT NO. 035  
FEBRUARY 29 TO MARCH 28, 2024



Pier 42: KIWC civil crew used the Vac Truck to remove dredged slurry from the land side of the CWCB on P7 and P8 (Approx STA 13+43 to STA 14+71)



Pier 43: KIWC Bridge and Marine crew continued to lay out and burn holes for the tie rod and rebar penetrations in P17 of the CWCB



KIWC probing harbor floor using the Cat 1250 excavator.



Pier 43: KIWC civil crew (Sanu's) wrapped the tie rod coupler with the Densyl tape followed by the black PVC tape (P2/P3 LSCRB)



Pier 43: KIWC Bridge and Marine crew continued to burn the holes for the tie rod and rebar penetrations of the CWCB on P 17



Snug Harbor: KIWC used the CAT D6 dozer to spread the fill material in 12-inch loose lifts for the 13th layer



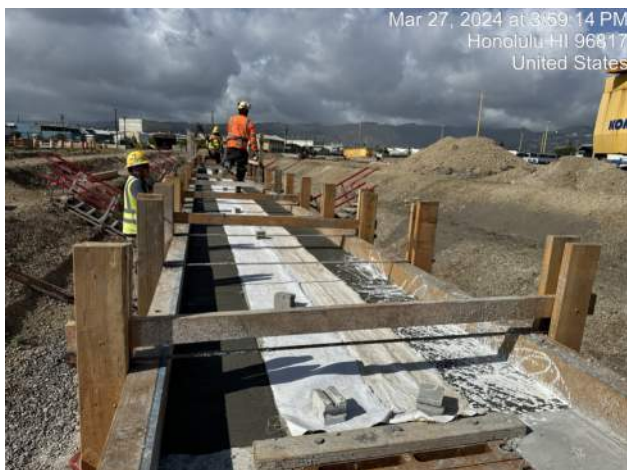
H.C. 10498 KAPALAMA CONTAINER TERMINAL YARD WHARF AND DREDGING  
MONTHLY REPORT NO. 035  
FEBRUARY 29 TO MARCH 28, 2024



ESI collecting water samples from Pier 42.



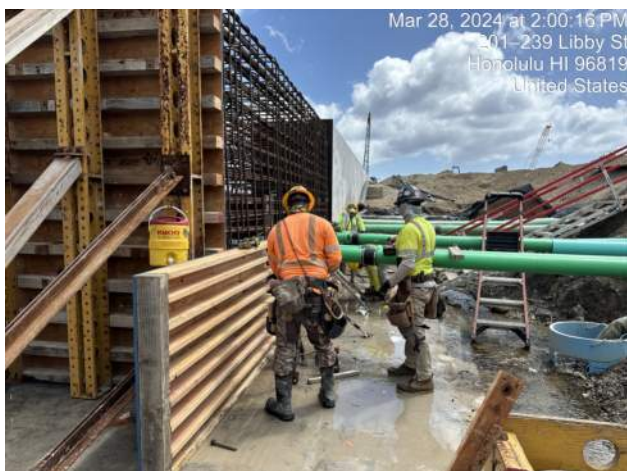
Pier 43: KIWC civil crew (Sanu's) continued to excavate th tie rod trench and installed the tie rod assemblies



KIWC placing the curing blanket for TD-3 P6T



Pier 43: KIWC welder continued to weld th #8 "U" rebar between the sheet pile interlocks



KIWC installing formwork for P1 of the cap beam on Pier 41



KIWC placing a new section of filter fabric over the cleaned 3b.