

Monthly Report No. 033

December 29, 2023 – February 1, 2024

KAPALAMA CONTAINER TERMINAL WHARF AND DREDGING

Job HC 10498

Honolulu Harbor, Oahu, Hawaii

Prepared for:



State of Hawaii
Department of Transportation
Harbors Division

Prepared by:



Harbors Project No. H.C. 10498

MONTHLY REPORT NO. 033

Period of December 29 – February 1, 2024
Kapalama Container Terminal Wharf and Dredging
Honolulu Harbor, Oahu, Job HC 10498
State of Hawaii, Department of Transportation, Harbors Division
Contract No. 69245

A. PROJECT SUMMARY

Project:	Kapalama Container Terminal Wharf and Dredging
Project Number	HC 10498
Location	Honolulu Harbor, Oahu
Owner	State of Hawaii Department of Transportation; Harbors Division
Design Consultant	Moffatt and Nichol
General Contractor	Kiewit Infrastructure West Co.
Construction Manager	Yogi Kwong Engineers, LLC
Notice to Proceed Date	January 4, 2021
Contract Completion Date	April 4, 2024 (To Be Amended) July 31, 2025 (Pending New Contract Amendment)

B. CURRENT PROJECT SCHEDULE (See next page)

MAJOR ACTIVITY:	COMPLETION DATES AS OF KIWC OCTOBER 2023 SCHEDULE:					DD-MON-YYYY: ACTUAL COMPLETION DATE (Month Year) = Anticipated Completion Date**
	PIER 41	PIER 42	SNUG HARBOR	PIER 43	HC 10502 (Ph 1)	
HDD Submarine Water Line - Completed	N/A	N/A	N/A	21-July-2023	N/A	
<i>Mass Grading</i>	13-May-2021	06-July-2021	N/A	(August 2023)	N/A	
Landside Demolition - Completed	13-April-2021	27-April-2021	N/A	16-Feb-2022	N/A	
In-Water Demolition - Completed	29-Oct-2021	N/A	19-Nov-2021	N/A	N/A	
<i>Stone Columns (Pre-drill)</i>	06-Oct-2021	5-Aug-2021	6-July-2022	(August 2023)	N/A	
<i>Stone Columns (Installation)</i>	14-Oct-2021	12-Aug-2021	6-July-2022	(September 2023)	N/A	
<i>Combi-Wall (Pre-Drill)</i>	29-Oct-2021	17-Dec-2021	29-Sept 2022	(October 2023)	N/A	
<i>Combi-Wall (Installation)</i>	28-Sept-2022	28-April-2023	4-Nov-2022	(November 2023)	N/A	
<i>Surcharge Period</i>	28-April-2023	N/A	(September 2024)	N/A	N/A	
<i>Tie Rods</i>	25-April-2023	(January 2024)	(October 2024)	(June 2024)	N/A	
Capping Beam	(April 2024)	(February 2024)	(March 2024)	(June 2024)	N/A	
<i>Tie Rod Deadman</i>	22-Dec-2022	N/A	N/A	N/A	N/A	
Land Side Crane Rail Beam	N/A	(January 2024)	(August 2023)	(April 2024)	N/A	
<i>Water & Electrical Utilities</i>	(October 2023)	(September 2024)	(October 2024)	(July 2024)	N/A	
<i>Drainage Structures</i>	(March 2024)	(January 2025)	(October 2024)	(August 2024)	N/A	
Water Side Crane Rail Beam	N/A	(June 2024)	(August 2024)	(October 2024)	N/A	
<i>Concrete Tie-Beam</i>	N/A	(August 2024)	(September 2024)	(February 2025)	N/A	
Crane Rails Installed	N/A	(December 2024)	(February 2025)	(April 2025)	N/A	
Crane Substation Switchgear & Transformer Delivered to KCT	N/A	(Dec 2023 – Jan 2024)	N/A	N/A	N/A	
Crane Substation	N/A	(December 2024)	N/A	N/A	N/A	
Dredging	(April 2024)	(April 2025)	(April 2025)	(September 2024)	N/A	
Fenders Installed	(October 2024)	(January 2025)	(February 2025)	(July 2025)	N/A	
PCC Pavement	(September 2024)	(November 2024)	(January 2025)	(May 2025)	(July 2024)	
<i>Cathodic Protection</i>	(July 2024)	(November 2024)	(January 2025)	(May 2025)	N/A	
<i>Pavement Striping</i>	(August 2024)	(January 2025)	(February 2025)	(July 2025)	(September 2024)	
TWIC Fencing	N/A	N/A	N/A	(July 2025)	(September 2024)	
PROJECT COMPLETION	(JULY 31, 2025)					

MONTHLY REPORT NO. 033

Period of December 29 – February 1, 2024
Kapalama Container Terminal Wharf and Dredging
Honolulu Harbor, Oahu, Job HC 10498
State of Hawaii, Department of Transportation, Harbors Division
Contract No. 69245

C. ACTIVITIES

Work observed at Pier 41:

- KIWC continued working on TD-3 walls from STA 3+00 to 5+00.
- KIWC continued in water dredging to generate surcharge material.

Work Observed at Pier 42:

- KIWC completed concrete pour for CWCB Pour 5 and 8.
- KIWC continued working on rebar installation and water utility vault for Pour #10.
- KIWC repaired the existing in-water turbidity curtain. KIWC preparing to replace curtain with newly purchased soon.

Work Observed at Pier 43:

- KIWC backfilled on the landside of the LSCRB (STA 2+30to 6+55).
- KIWC completed three (3) CIDH piles.
- KIWC removed two (2) double kings and one (1) sheet pile to repair the combi-wall.

Work Observed at Snug Harbor:

- KIWC continued work to install surcharge material. KIWC completed 2nd through 4th lift from elevation 11-14' MLLW.
- KIWC began installing the 5th lift of surcharge material.

Work Observed at PCCP:

- No work observed.

MONTHLY REPORT NO. 033

Period of December 29 – February 1, 2024
Kapalama Container Terminal Wharf and Dredging
Honolulu Harbor, Oahu, Job HC 10498
State of Hawaii, Department of Transportation, Harbors Division
Contract No. 69245

D. AERIAL PHOTOGRAPH



November 2023



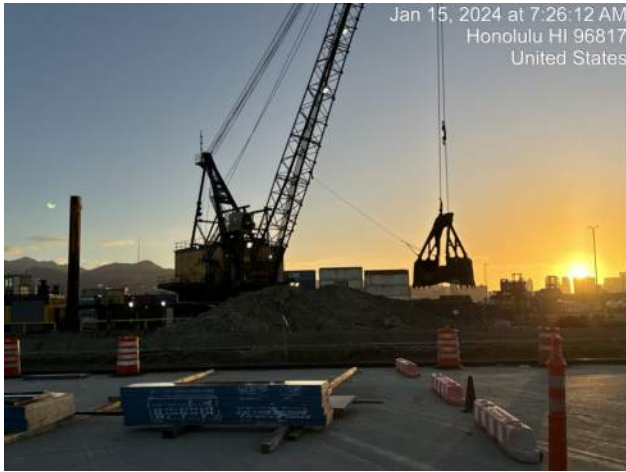
December 2023

MONTHLY REPORT NO. 033

Period of December 29 – February 1, 2024
Kapalama Container Terminal Wharf and Dredging
Honolulu Harbor, Oahu, Job HC 10498
State of Hawaii, Department of Transportation, Harbors Division
Contract No. 69245

E. **PROJECT PHOTOGRAPHS**
(See attached Sheets)

H.C. 10498 KAPALAMA CONTAINER TERMINAL YARD WHARF AND DREDGING
MONTHLY REPORT NO. 033
DECEMBER 29 TO FEBRUARY 1, 2024



KIWC starting in-water dredging for the shift



Pier 42: KIWC mason crew continued to grout the form tie holes for P3 and P4 of the CWCB



KIWC finished probing using the 63' double king pile



Pier 42: KIWC mason crew continued to patch the honeycombs on the wall of the CWCB of P2 to P4



Pier 42: HRSPI crew continued to fabricate the rebar cage for Pours 14 and 15 of the CWCB



KIWC installing grates for TD-3 P2T Sta. 2+00 to 3+00

H.C. 10498 KAPALAMA CONTAINER TERMINAL YARD WHARF AND DREDGING
 MONTHLY REPORT NO. 033
 DECEMBER 29 TO FEBRUARY 1, 2024



KIWC spreading an 8" loose lift of base course on the landside of the LSCRB.



Pier 42: Laydown area (Across P14/15) HRSPI crew continued to fabricate the rebar cage of Pours P14/15 of the CWCB



Documentation of damaged sheet pile pulled from Pier 43 location S-74



KIWC excavating native material on pier 43.



Snug Harbor: Grids 58, 59 and 60 were uncompacted for lift 4 and need to be tested before placing any fill



Pier 43: KIWC civil crew (Sanu's crew) taped the exposed tie rods and installed the PVC sleeves for Pour #P7

H.C. 10498 KAPALAMA CONTAINER TERMINAL YARD WHARF AND DREDGING
MONTHLY REPORT NO. 033
DECEMBER 29 TO FEBRUARY 1, 2024



View of Snug Harbor surcharge area



KIWC dredge support crew using the CAT 950M loader and CAT 730 dump trucks to haul material to the Snug Harbor surcharge area



KIWC continued in-water dredging and moving dredge spoils on Pier 41



View of surcharge material on snug harbor.



KIWC spreading surcharge with an excavator.



KIWC leveling the surcharge with a track dozer.

H.C. 10498 KAPALAMA CONTAINER TERMINAL YARD WHARF AND DREDGING
MONTHLY REPORT NO. 033
DECEMBER 29 TO FEBRUARY 1, 2024



Pier 43: KIWC civil crew continued to place minus (-) 3" aggregate of the LSCRB from P2 to P6



View of Sta. 1+00 of TD-3



KIWC continued in-water dredging on Pier 41



HRSPI installing CSL tubes into the 36" CIDH rebar cages.



KIWC dry finishing the surface of capping beam pours #6 and 7.



KIWC continued installation of TD-3 formwork from Sta. 3+00 to 5+00

H.C. 10498 KAPALAMA CONTAINER TERMINAL YARD WHARF AND DREDGING
MONTHLY REPORT NO. 033
DECEMBER 29 TO FEBRUARY 1, 2024



Pier 43: KIWC carpentry crew (Philip's crew) started to place the concrete mixed for the mud mat for pour P16 of the combi wall



KIWC dry finishing the surface of the capping beam.



KIWC installing the formwork for TD-3 P3T Sta. 3+00 to 4+00 on Pier 41



PCCP: KIWC carpentry crew used the Hyster forklift to clear off construction equipment and materials of the block out



View of compacted fill around the settlement monitors.



MPE performing 2nd compaction test in blockout area with KIWC present

H.C. 10498 KAPALAMA CONTAINER TERMINAL YARD WHARF AND DREDGING
MONTHLY REPORT NO. 033
DECEMBER 29 TO FEBRUARY 1, 2024



Pier 43: KIWC civil crew used the vacuum truck to suck out the muck inside the king pile annulus to -5' elevation



Snug Harbor: Compacted the dredge material over Grids 8, 9, and 10 of Snug at approximate elevation +10'



KIWC continued installation of TD-3 P3T on Pier 41



Snug Harbor: KIWC used the CAT 336F excavator's bucket to break down the coral boulders in small pieces



Pier 41: Loading dredged material into the bed of the CAT 730 rock truck



Snug Harbor: The CAT D6 dozer was used to spread the dredged material in 12-inch thick loose lifts

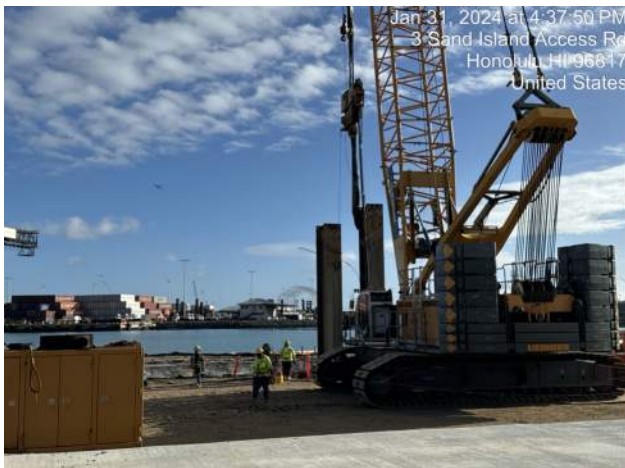
H.C. 10498 KAPALAMA CONTAINER TERMINAL YARD WHARF AND DREDGING
MONTHLY REPORT NO. 033
DECEMBER 29 TO FEBRUARY 1, 2024



Pier 43: Between pours P22 and P23 - KIWC carpentry crew installed the steel forms for the mud mat pour



KIWC continued installation of formwork and grates for TD-3 Sta. 3+00 to 4+00



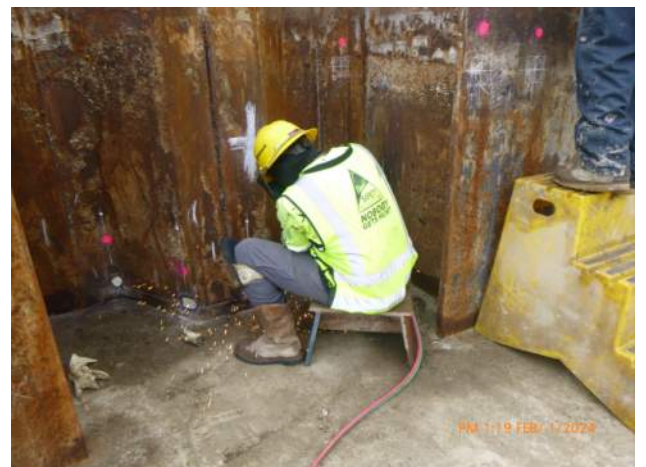
KIWC removed the remnants of the sheet pile interlock on Pier 43



Snug Harbor: KIWC civil crew (Brent's) continued to fill the surcharge to +15 elev.



KIWC grading the pavement blockouts on the north side of the jobsite.



KIWC burning holes for rebar penetrations in the combi wall.