

Monthly Report No. 034

February 2, 2023 – February 28, 2024

KAPALAMA CONTAINER TERMINAL WHARF AND DREDGING

Job HC 10498

Honolulu Harbor, Oahu, Hawaii

Prepared for:



State of Hawaii
Department of Transportation
Harbors Division

Prepared by:



Harbors Project No. H.C. 10498

MONTHLY REPORT NO. 034

Period of February 2 – February 28, 2024
Kapalama Container Terminal Wharf and Dredging
Honolulu Harbor, Oahu, Job HC 10498
State of Hawaii, Department of Transportation, Harbors Division
Contract No. 69245

A. PROJECT SUMMARY

Project:	Kapalama Container Terminal Wharf and Dredging
Project Number	HC 10498
Location	Honolulu Harbor, Oahu
Owner	State of Hawaii Department of Transportation; Harbors Division
Design Consultant	Moffatt and Nichol
General Contractor	Kiewit Infrastructure West Co.
Construction Manager	Yogi Kwong Engineers, LLC
Notice to Proceed Date	January 4, 2021
Contract Completion Date	April 4, 2024 (To Be Amended) July 31, 2025 (Pending New Contract Amendment)

B. CURRENT PROJECT SCHEDULE – ALL DATES SUBJECT TO CHANGE WITHOUT NOTICE (See next page)

MAJOR ACTIVITY:	COMPLETION DATES AS OF KIWC DECEMBER 2023 SCHEDULE:					DD-MON-YYYY: ACTUAL COMPLETION DATE (Month Year) = Anticipated Completion Date** [NOTE: <u>ALL</u> ANTICIPATED DATES ARE SUBJECT TO CHANGE WITHOUT NOTICE]
	PIER 41	PIER 42	SNUG HARBOR	PIER 43	HC 10502 (Ph 1)	
HDD Submarine Water Line - Completed	N/A	N/A	N/A	21-July-2023	N/A	
<i>Mass Grading</i>	13-May-2021	06-July-2021	N/A	8-Aug-2023	N/A	
Landside Demolition - Completed	13-April-2021	27-April-2021	N/A	16-Feb-2022	N/A	
In-Water Demolition - Completed	29-Oct-2021	N/A	19-Nov-2021	N/A	N/A	
<i>Stone Columns (Pre-drill)</i>	06-Oct-2021	5-Aug-2021	6-July-2022	31-Aug-2023	N/A	
<i>Stone Columns (Installation)</i>	14-Oct-2021	12-Aug-2021	6-July-2022	01-Sept-2023	N/A	
<i>Combi-Wall (Pre-Drill)</i>	29-Oct-2021	17-Dec-2021	29-Sept 2022	22-Sept-2023	N/A	
<i>Combi-Wall (Installation)</i>	28-Sept-2022	28-April-2023	4-Nov-2022	01-Dec-2023	N/A	
<i>Surcharge Period</i>	28-April-2023	N/A	<i>(September 2024)</i>	N/A	N/A	
<i>Tie Rods</i>	25-April-2023	<i>(March 2024)</i>	<i>(December 2024)</i>	<i>(July 2024)</i>	N/A	
<i>Capping Beam</i>	<i>(June 2024)</i>	<i>(April 2024)</i>	<i>(May 2024)</i>	<i>(July 2024)</i>	N/A	
<i>Tie Rod Deadman</i>	22-Dec-2022	N/A	N/A	N/A	N/A	
<i>Land Side Crane Rail Beam</i>	N/A	<i>(April 2024)</i>	8-Aug-2023	<i>(April 2024)</i>	N/A	
<i>Water & Electrical Utilities</i>	<i>(March 2024)</i>	<i>(September 2024)</i>	<i>(December 2024)</i>	<i>(July 2024)</i>	N/A	
<i>Drainage Structures</i>	<i>(August 2024)</i>	<i>(March 2025)</i>	<i>(November 2024)</i>	<i>(August 2024)</i>	N/A	
<i>Water Side Crane Rail Beam</i>	N/A	<i>(August 2024)</i>	<i>(October 2024)</i>	<i>(December 2024)</i>	N/A	
<i>Concrete Tie-Beam</i>	N/A	<i>(October 2024)</i>	<i>(December 2024)</i>	<i>(March 2025)</i>	N/A	
<i>Crane Rails Installed</i>	N/A	<i>(February 2025)</i>	<i>(April 2025)</i>	<i>(June 2025)</i>	N/A	
<i>Crane Substation Switchgear & Transformer Delivered to KCT</i>	N/A	29-Sept-2023 [Transformer] 5-Jan-2024 [Switchgear]	N/A	N/A	N/A	
<i>Crane Substation</i>	N/A	<i>(December 2024)</i>	N/A	N/A	N/A	
<i>Dredging [at bulkhead wall]</i>	<i>(March 2024)</i>	<i>(April 2024)</i>	<i>(November 2024)</i>	<i>(October 2024)</i>	N/A	
<i>Dredging [offshore]</i>	9-Jan-2024	<i>(April 2025)</i>	<i>(May 2025)</i>	<i>(August 2024)</i>	N/A	
<i>Fenders Installed</i>	<i>(December 2024)</i>	<i>(February 2025)</i>	<i>(March 2025)</i>	<i>(July 2025)</i>	N/A	
<i>PCC Pavement</i>	<i>(November 2024)</i>	<i>(December 2024)</i>	<i>(February 2025)</i>	<i>(May 2025)</i>	<i>(November 2024)</i>	
<i>Cathodic Protection</i>	<i>(November 2024)</i>	<i>(January 2025)</i>	<i>(March 2025)</i>	<i>(May 2025)</i>	N/A	
<i>Pavement Striping</i>	<i>(December 2024)</i>	<i>(February 2025)</i>	<i>(March 2025)</i>	<i>(July 2025)</i>	<i>(January 2025)</i>	
<i>TWIC Fencing</i>	N/A	N/A	N/A	<i>(July 2025)</i>	<i>(January 2025)</i>	
PROJECT COMPLETION	(JULY 31, 2025)					

MONTHLY REPORT NO. 034

Period of February 2 – February 28, 2024
Kapalama Container Terminal Wharf and Dredging
Honolulu Harbor, Oahu, Job HC 10498
State of Hawaii, Department of Transportation, Harbors Division
Contract No. 69245

C. ACTIVITIES

Work observed at Pier 41:

- KIWC poured concrete for TD-3 walls from STA 3+00 to 5+00.
- KIWC continued in water dredging to generate surcharge material.

Work Observed at Pier 42:

- KIWC continued working on rebar installation and water utility vault for Pour #10 and #14.
- KIWC replaced the entire turbidity curtain with a newly purchased one.
- KIWC removed KP-65 and 66 to try and clear obstruction.

Work Observed at Pier 43:

- KIWC excavated CWCB from STA 0+50 to 1+00.

Work Observed at Snug Harbor:

- KIWC completed surcharge up to Lift 9. KIWC will test Lift 9 next week.

Work Observed at PCCP:

- KIWC began preparing PCCP blockouts near Amazon and PASHA's Maintenance Building. Work included grubbing, grading, compaction, and concrete formwork.

MONTHLY REPORT NO. 034

Period of February 2 – February 28, 2024
Kapalama Container Terminal Wharf and Dredging
Honolulu Harbor, Oahu, Job HC 10498
State of Hawaii, Department of Transportation, Harbors Division
Contract No. 69245

D. AERIAL PHOTOGRAPH



November 2023



December 2023

MONTHLY REPORT NO. 034

Period of February 2 – February 28, 2024
Kapalama Container Terminal Wharf and Dredging
Honolulu Harbor, Oahu, Job HC 10498
State of Hawaii, Department of Transportation, Harbors Division
Contract No. 69245

E. **PROJECT PHOTOGRAPHS**
(See attached Sheets)

H.C. 10498 KAPALAMA CONTAINER TERMINAL YARD WHARF AND DREDGING
MONTHLY REPORT NO. 034
FEBRUARY 2 TO FEBRUARY 28, 2024



Snug Harbor: KIWC civil crew placing the first lift grids 19 and 33 of Snug



KIWC setting forms for the mud mat on the waterside of the Pier 43 combi wall.



KIWC setting tie rods through the combi wall.



KIWC dredging at the corner of pier 41/42.



KIWC breaking up excess concrete along the wall of the capping beam excavation.



KIWC dredging at the corner of pier 41/42.

H.C. 10498 KAPALAMA CONTAINER TERMINAL YARD WHARF AND DREDGING
MONTHLY REPORT NO. 034
FEBRUARY 2 TO FEBRUARY 28, 2024



View of dry finish on capping beam pour #5.



Pier 43: STA 1+69 to STA 2+60 - KIWC Bridge
_Marine crew continued to cut the top of the
combi wall for final top elevation



KIWC continued grading the blockout on the
north end of the site



KIWC placing the 6th lift of surcharge over
snug harbor.



KIWC grading and leveling the 6th lift of
backfill.



KIWC pouring a mud mat on the waterside of
the LSCRB.

H.C. 10498 KAPALAMA CONTAINER TERMINAL YARD WHARF AND DREDGING
MONTHLY REPORT NO. 034
FEBRUARY 2 TO FEBRUARY 28, 2024



KIWC cutting the top of the combi wall to top elevation.



KIWC installing the waterstop for TD-3 P1T Sta. 1+00 to 2+00



MPE performing concrete testing for the TD-3 pours



KIWC dredging along pier 41.



KIWC spreading fill on snug harbor surcharge.



KIWC cutting the combi wall to top elevation.

H.C. 10498 KAPALAMA CONTAINER TERMINAL YARD WHARF AND DREDGING
MONTHLY REPORT NO. 034
FEBRUARY 2 TO FEBRUARY 28, 2024



HRSPI fabricating the rebar cage for the capping beam.



KIWC cutting the combi wall to top elevation.



KIWC compacting base coarse around the edge of the blockout.



KIWC dredging along pier 41.



KIWC pulling up KP-065 to check the interlock.



View of formwork installed around TD-3 pour #4 walls.

H.C. 10498 KAPALAMA CONTAINER TERMINAL YARD WHARF AND DREDGING
MONTHLY REPORT NO. 034
FEBRUARY 2 TO FEBRUARY 28, 2024



KIWC setting forms for TD-3 pour #4.



KIWC cutting the continuous king pile wall to top elevation.



KIWC testing stamp for drain stencil.



KIWC excavating the stone column work pad on pier 43,



KIWC demolishing the sawcut PCC at the blockout south of the PASHA maintenance building



KIWC continued in-water dredging on Pier 41

H.C. 10498 KAPALAMA CONTAINER TERMINAL YARD WHARF AND DREDGING
MONTHLY REPORT NO. 034
FEBRUARY 2 TO FEBRUARY 28, 2024



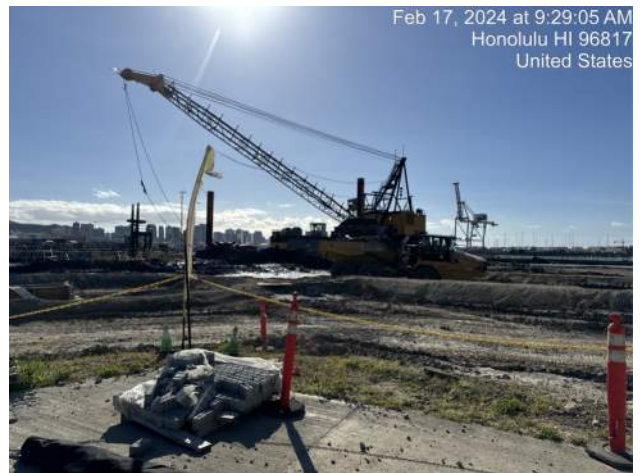
KIWC repairing interlocks on double king pile KP-066.



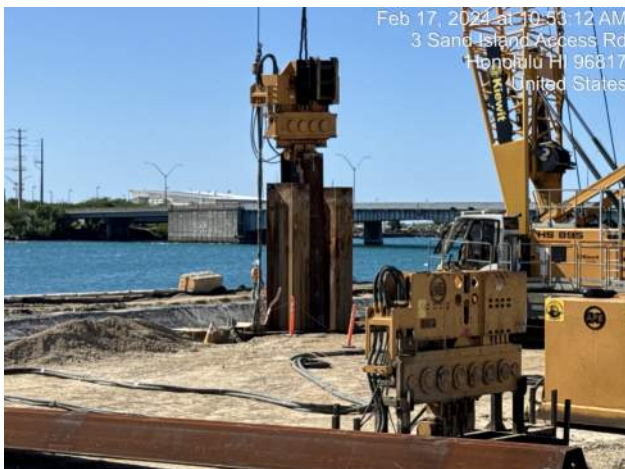
KIWC installing formwork at capping beam pour #14 CJ's.



KIWC placing grates and frames for TD-3 P4T on Pier 41



KIWC hauling dredge material from Pier 41 to Pier 43



KIWC finished driving the follower king pile on the east end of location SP-74 on Pier 43



KIWC drove the follower king pile on the east end of location SP-74 on Pier 43

H.C. 10498 KAPALAMA CONTAINER TERMINAL YARD WHARF AND DREDGING
MONTHLY REPORT NO. 034
FEBRUARY 2 TO FEBRUARY 28, 2024



KIWC staging formwork for capping beam pour #14 on pier 42.



KIWC dredging at the corner of pier 41/42.



View of formwork around capping beam pour #14.



KIWC trenching for tie rods on pier 43.



KIWC burning tie rod penetrations through the combi wall on pier 43.



KIWC setting formwork around capping beam pour #14.

H.C. 10498 KAPALAMA CONTAINER TERMINAL YARD WHARF AND DREDGING
MONTHLY REPORT NO. 034
FEBRUARY 2 TO FEBRUARY 28, 2024



KIWC building a berm around the SP-074 excavation.



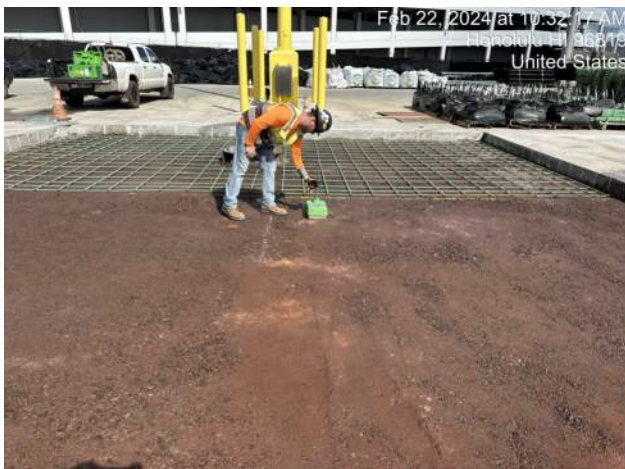
MPE taking a soil sample on pier 43.



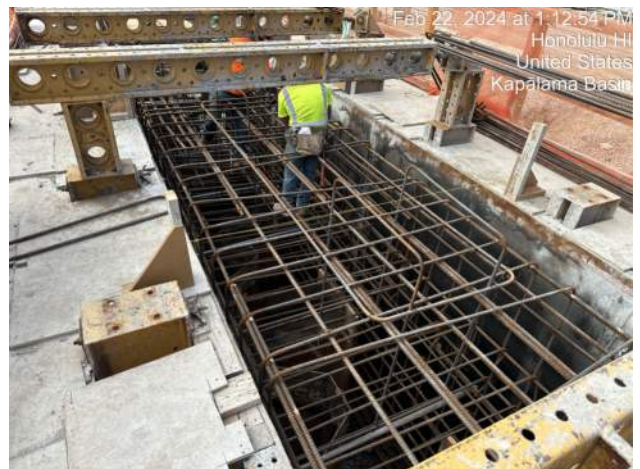
KIWC continued installation of tie rods on Pier 43



KIWC continued in-water dredging and placing material into CAT 730 dump trucks to be stockpiled on Pier 41



MPE performing compaction testing for the north end of the H1 blockout



HRSPI installing bollard reinforcement for capping beam P14 on Pier 43

H.C. 10498 KAPALAMA CONTAINER TERMINAL YARD WHARF AND DREDGING
MONTHLY REPORT NO. 034
FEBRUARY 2 TO FEBRUARY 28, 2024



KIWC setting rebar cage over capping beam pour #15.



KIWC continued placing dredge spoils on Pier 41



KIWC placing geogrid for the PCCP blackout between the Pasha maintenance area and parking lot



KIWC placing CLSM to create a bulkhead east and west of the SP-74 area to prevent water infiltration into the capping beam excavation after the piles are removed



KIWC pushing the #5 rebar dowel into the drilled hole and epoxy seeping out around the dowel



KIWC finished drilling dowels in the "H1" blackout for the shift

H.C. 10498 KAPALAMA CONTAINER TERMINAL YARD WHARF AND DREDGING
MONTHLY REPORT NO. 034
FEBRUARY 2 TO FEBRUARY 28, 2024



View of formwork for CLSM cutoff wall.



KIWC dredging along pier 42.



Pier 42: KIWC civil crew (Micah's crew) placed CLSM material for the water cut off wall of P6 on the land side of the CWCB



Pier 42: KIWC DB Seattle continued in water dredging across P1 of the CWCB



Pier 41: KIWC civil crew used the CAT 304 mini excavator to initially excavate the subgrade near the tie rods at the PO Deadman extension



Pier 41: PO Deadman extension - Excavation spoils of coral rock and sand for the installation of the tie rods