

Monthly Report No. 032

December 1, 2023 – December 28, 2023

KAPALAMA CONTAINER TERMINAL WHARF AND DREDGING

Job HC 10498

Honolulu Harbor, Oahu, Hawaii

Prepared for:



State of Hawaii
Department of Transportation
Harbors Division

Prepared by:



Harbors Project No. H.C. 10498

MONTHLY REPORT NO. 032

Period of December 1 – December 28, 2023
Kapalama Container Terminal Wharf and Dredging
Honolulu Harbor, Oahu, Job HC 10498
State of Hawaii, Department of Transportation, Harbors Division
Contract No. 69245

A. PROJECT SUMMARY

Project:	Kapalama Container Terminal Wharf and Dredging
Project Number	HC 10498
Location	Honolulu Harbor, Oahu
Owner	State of Hawaii Department of Transportation; Harbors Division
Design Consultant	Moffatt and Nichol
General Contractor	Kiewit Infrastructure West Co.
Construction Manager	Yogi Kwong Engineers, LLC
Notice to Proceed Date	January 4, 2021
Contract Completion Date	April 4, 2024 (To Be Amended) July 31, 2025 (Pending New Contract Amendment)

B. CURRENT PROJECT SCHEDULE

(See next page)

MAJOR ACTIVITY:	COMPLETION DATES AS OF KIWC OCTOBER 2023 SCHEDULE:					DD-MON-YYYY: ACTUAL COMPLETION DATE (Month Year) = Anticipated Completion Date**
	PIER 41	PIER 42	SNUG HARBOR	PIER 43	HC 10502 (Ph 1)	
HDD Submarine Water Line - Completed	N/A	N/A	N/A	21-July-2023	N/A	
<i>Mass Grading</i>	13-May-2021	06-July-2021	N/A	(August 2023)	N/A	
Landside Demolition - Completed	13-April-2021	27-April-2021	N/A	16-Feb-2022	N/A	
In-Water Demolition - Completed	29-Oct-2021	N/A	19-Nov-2021	N/A	N/A	
<i>Stone Columns (Pre-drill)</i>	06-Oct-2021	5-Aug-2021	6-July-2022	(August 2023)	N/A	
<i>Stone Columns (Installation)</i>	14-Oct-2021	12-Aug-2021	6-July-2022	(September 2023)	N/A	
<i>Combi-Wall (Pre-Drill)</i>	29-Oct-2021	17-Dec-2021	29-Sept 2022	(October 2023)	N/A	
<i>Combi-Wall (Installation)</i>	28-Sept-2022	28-April-2023	4-Nov-2022	(November 2023)	N/A	
<i>Surcharge Period</i>	28-April-2023	N/A	(September 2024)	N/A	N/A	
<i>Tie Rods</i>	25-April-2023	(January 2024)	(October 2024)	(June 2024)	N/A	
Capping Beam	(April 2024)	(February 2024)	(March 2024)	(June 2024)	N/A	
<i>Tie Rod Deadman</i>	22-Dec-2022	N/A	N/A	N/A	N/A	
Land Side Crane Rail Beam	N/A	(January 2024)	(August 2023)	(April 2024)	N/A	
<i>Water & Electrical Utilities</i>	(October 2023)	(September 2024)	(October 2024)	(July 2024)	N/A	
<i>Drainage Structures</i>	(March 2024)	(January 2025)	(October 2024)	(August 2024)	N/A	
Water Side Crane Rail Beam	N/A	(June 2024)	(August 2024)	(October 2024)	N/A	
<i>Concrete Tie-Beam</i>	N/A	(August 2024)	(September 2024)	(February 2025)	N/A	
Crane Rails Installed	N/A	(December 2024)	(February 2025)	(April 2025)	N/A	
Crane Substation Switchgear & Transformer Delivered to KCT	N/A	(Dec 2023 – Jan 2024)	N/A	N/A	N/A	
Crane Substation	N/A	(December 2024)	N/A	N/A	N/A	
Dredging	(April 2024)	(April 2025)	(April 2025)	(September 2024)	N/A	
Fenders Installed	(October 2024)	(January 2025)	(February 2025)	(July 2025)	N/A	
PCC Pavement	(September 2024)	(November 2024)	(January 2025)	(May 2025)	(July 2024)	
<i>Cathodic Protection</i>	(July 2024)	(November 2024)	(January 2025)	(May 2025)	N/A	
<i>Pavement Striping</i>	(August 2024)	(January 2025)	(February 2025)	(July 2025)	(September 2024)	
TWIC Fencing	N/A	N/A	N/A	(July 2025)	(September 2024)	
PROJECT COMPLETION	(JULY 31, 2025)					

MONTHLY REPORT NO. 032

Period of December 1 – December 28, 2023
Kapalama Container Terminal Wharf and Dredging
Honolulu Harbor, Oahu, Job HC 10498
State of Hawaii, Department of Transportation, Harbors Division
Contract No. 69245

C. ACTIVITIES

Work observed at Pier 41:

- KIWC started working on TD-3 walls from STA 2+00 to 3+00.
- KIWC continued in water dredging to generate surcharge material.

Work Observed at Pier 42:

- KIWC completed the radii corner at Pier 41/42.

Work Observed at Pier 43:

- KIWC completed 6 out of 12 remaining 48" CIDH piles.
- KIWC backfilled on the landside of the LSCRB (P1 – P6).
- AFT onsite to perform CSL testing of completed CIDH shafts.

Work Observed at Snug Harbor:

- KIWC began work to install surcharge material. KIWC completed first lift from elevation 10-11' MLLW.

Work Observed at PCCP:

- HRSPI installing CSL tubes within the 36" CIDH rebar cages for the waterside crane rail beam.
- Trelleborg onsite and repaired cone fenders that were damaged during delivery.

MONTHLY REPORT NO. 032

Period of December 1 – December 28, 2023
Kapalama Container Terminal Wharf and Dredging
Honolulu Harbor, Oahu, Job HC 10498
State of Hawaii, Department of Transportation, Harbors Division
Contract No. 69245

D. AERIAL PHOTOGRAPH



November 2023



December 2023

MONTHLY REPORT NO. 032

Period of December 1 – December 28, 2023
Kapalama Container Terminal Wharf and Dredging
Honolulu Harbor, Oahu, Job HC 10498
State of Hawaii, Department of Transportation, Harbors Division
Contract No. 69245

E. **PROJECT PHOTOGRAPHS**
(See attached Sheets)

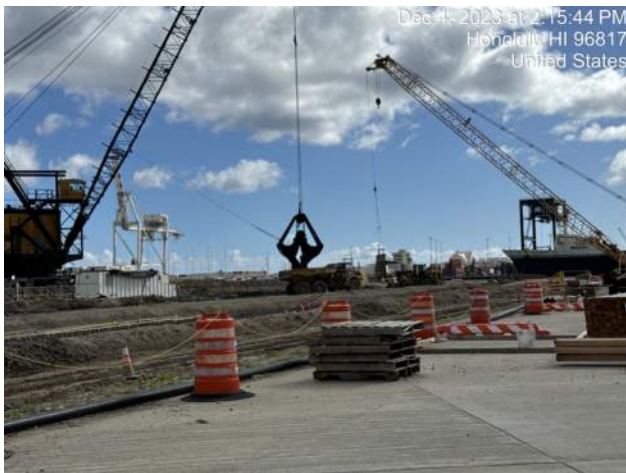
H.C. 10498 KAPALAMA CONTAINER TERMINAL YARD WHARF AND DREDGING
MONTHLY REPORT NO. 032
DECEMBER 1 TO DECEMBER 28, 2023



HRSPI installing CSL tubes for the 36" rebar cages on the PCC



KIWC repairing the tie rod tape wrap on the PCC



KIWC dredging on Pier 41



KIWC continued loosening formwork for P7 of the capping beam on Pier 42



KIWC installing formwork around capping beam pour #11.



KIWC pouring a cutoff wall near the corner of pier 41/42.

H.C. 10498 KAPALAMA CONTAINER TERMINAL YARD WHARF AND DREDGING
MONTHLY REPORT NO. 032
DECEMBER 1 TO DECEMBER 28, 2023



Pier 42: P-11 KIWC carpentry crew installed bulk head and expansion sheet



KIWC cleaning out the bottom of cage 14-A1-48A.



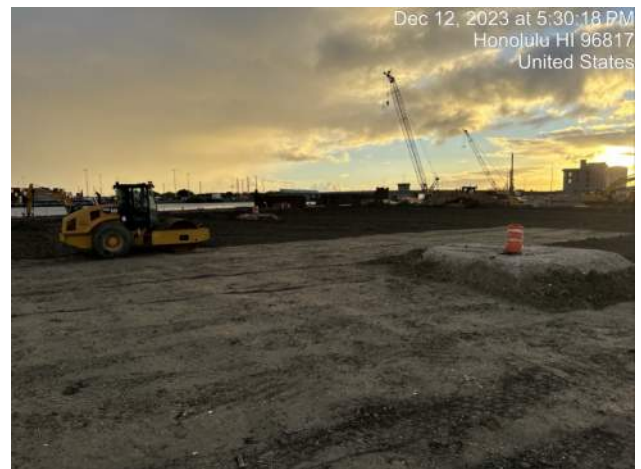
KIWC installing the double layer tape wrap system for the tie rods on the PCC



KIWC cleaning out the bottom of CIDH shaft 14-A1-48A.



KIWC backfilling and compacting on the landside of the P43 LSCR.



KIWC grading and compacting the surcharge area at Snug Harbor

H.C. 10498 KAPALAMA CONTAINER TERMINAL YARD WHARF AND DREDGING
MONTHLY REPORT NO. 032
DECEMBER 1 TO DECEMBER 28, 2023



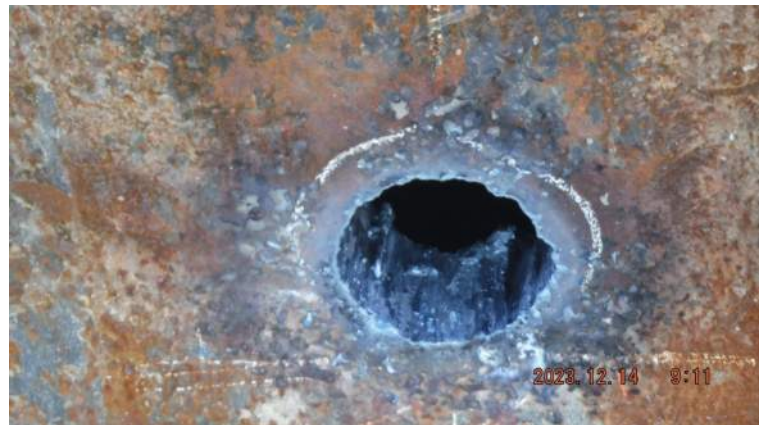
Pier 42: KIWC carpentry crew poured concrete for the reaction block on the corners of Pier 41/42



KIWC progress installing formwork for P2T of TD-3 on Pier 41



KIWC progress installing rebar couplers for the P42 corner reinforcement



Pier 42: KIWC Bridge and Marine crew continued to lay out and burn the rebar and tie rod penetration from the CWCB



PCCP: KIWC carpentry crew unbolted the grate braces from the original assembly



Pier 41: DB Seattle continued in water dredging at approximately STA 18+00 to 19+50

H.C. 10498 KAPALAMA CONTAINER TERMINAL YARD WHARF AND DREDGING
MONTHLY REPORT NO. 032
DECEMBER 1 TO DECEMBER 28, 2023



Dec 16, 2023 at 8:53:14 AM
1399 Aiea St
Honolulu HI 96817
United States

KIWC moving stockpiled dredge spoils from Pier 41 to Pier 43



Dec 16, 2023 at 10:18:00 AM
Honolulu HI 96817
United States

View of the completed mockup pour of TD-3



2023.12.18 18:47

PCCP: KIWC carpentry crew continued to separate the grating from the support braces by unbolting the nuts and bolts



2023.12.19 8:35

Pier 42: KIWC Carpentry crew (Pihilip's crew) continued to strip the bulkhead of P11 of the CWCB



2023.12.18 10:59

Pier 42: KIWC Bridge and Marine crew continued to weld the "U" bar between the king and sheet piles interlocks



2023.12.19 13:20

Pier 42: HRSPI reinstalled the rebars for the utility vault in P5