

Monthly Report No. 030

September 29, 2023 – November 2, 2023

KAPALAMA CONTAINER TERMINAL WHARF AND DREDGING Job HC 10498 Honolulu Harbor, Oahu, Hawaii

Prepared for:



State of Hawaii
Department of Transportation
Harbors Division

Prepared by:



Harbors Project No. H.C. 10498

MONTHLY REPORT NO. 030

Period of September 29 – November 2, 2023
Kapalama Container Terminal Wharf and Dredging
Honolulu Harbor, Oahu, Job HC 10498
State of Hawaii, Department of Transportation, Harbors Division
Contract No. 69245

A. PROJECT SUMMARY

Project:	Kapalama Container Terminal Wharf and Dredging
Project Number	HC 10498
Location	Honolulu Harbor, Oahu
Owner	State of Hawaii Department of Transportation; Harbors Division
Design Consultant	Moffatt and Nichol
General Contractor	Kiewit Infrastructure West Co.
Construction Manager	Yogi Kwong Engineers, LLC
Notice to Proceed Date	January 4, 2021
Contract Completion Date	April 4, 2024 (To Be Amended) July 31, 2025 (Pending New Contract Amendment)

B. CURRENT PROJECT SCHEDULE

(See next page)

MAJOR ACTIVITY:	COMPLETION DATES AS OF KIWC JULY 2023 SCHEDULE:					DD-MON-YYYY: ACTUAL COMPLETION DATE (Month Year) = Anticipated Completion Date**
	PIER 41	PIER 42	SNUG HARBOR	PIER 43	HC 10502 (Ph 1)	
HDD Submarine Water Line - Completed	N/A	N/A	N/A	21-July-2023	N/A	
<i>Mass Grading</i>	13-May-2021	06-July-2021	N/A	(August 2023)	N/A	
Landside Demolition - Completed	13-April-2021	27-April-2021	N/A	16-Feb-2022	N/A	
In-Water Demolition - Completed	29-Oct-2021	N/A	19-Nov-2021	N/A	N/A	
<i>Stone Columns (Pre-drill)</i>	06-Oct-2021	5-Aug-2021	6-July-2022	(August 2023)	N/A	
<i>Stone Columns (Installation)</i>	14-Oct-2021	12-Aug-2021	6-July-2022	(September 2023)	N/A	
<i>Combi-Wall (Pre-Drill)</i>	29-Oct-2021	17-Dec-2021	29-Sept 2022	(October 2023)	N/A	
<i>Combi-Wall (Installation)</i>	28-Sept-2022	28-April-2023	4-Nov-2022	(November 2023)	N/A	
<i>Surcharge Period</i>	28-April-2023	N/A	(September 2024)	N/A	N/A	
<i>Tie Rods</i>	25-April-2023	(January 2024)	(October 2024)	(June 2024)	N/A	
Capping Beam	(October 2023)	(February 2024)	(March 2024)	(June 2024)	N/A	
<i>Tie Rod Deadman</i>	22-Dec-2022	N/A	N/A	N/A	N/A	
Land Side Crane Rail Beam	N/A	(February 2024)	(August 2023)	(April 2024)	N/A	
<i>Water & Electrical Utilities</i>	(October 2023)	(September 2024)	(October 2024)	(July 2024)	N/A	
<i>Drainage Structures</i>	(March 2024)	(January 2025)	(October 2024)	(August 2024)	N/A	
Water Side Crane Rail Beam	N/A	(June 2024)	(August 2024)	(October 2024)	N/A	
<i>Concrete Tie-Beam</i>	N/A	(August 2024)	(September 2024)	(February 2025)	N/A	
Crane Rails Installed	N/A	(December 2024)	(February 2025)	(April 2025)	N/A	
Crane Substation Switchgear & Transformer Delivered to KCT	N/A	(Dec 2023 – Jan 2024)	N/A	N/A	N/A	
Crane Substation	N/A	(November 2024)	N/A	N/A	N/A	
Dredging	(January 2024)	(March 2025)	(March 2025)	(September 2024)	N/A	
Fenders Installed	(August 2024)	(January 2025)	(February 2025)	(July 2025)	N/A	
PCC Pavement	(July 2024)	(November 2024)	(January 2025)	(May 2025)	(July 2024)	
<i>Cathodic Protection</i>	(July 2024)	(November 2024)	(January 2025)	(May 2025)	N/A	
<i>Pavement Striping</i>	(August 2024)	(January 2025)	(February 2025)	(July 2025)	(September 2024)	
TWIC Fencing	N/A	N/A	N/A	(July 2025)	(September 2024)	
PROJECT COMPLETION	(JULY 31, 2025)					

MONTHLY REPORT NO. 030

Period of September 29 – November 2, 2023
Kapalama Container Terminal Wharf and Dredging
Honolulu Harbor, Oahu, Job HC 10498
State of Hawaii, Department of Transportation, Harbors Division
Contract No. 69245

C. ACTIVITIES

Work observed at Pier 41:

- KIWC and HRSPI continued to install the rebar cage of Trench Drain #3 and Pour #0.
- KIWC resumed dredging work to generate surcharge material.

Work Observed at Pier 42:

- KIWC continues their work on the concrete bulkhead capping beam at sections Pour #3, 6, and 7(STA 14+71 to 17+76).
- KIWC continues their work on the concrete landside crane rail beam at section Pour #1. Work included installation of the tie rods and rebar cages.

Work Observed at Pier 43:

- KIWC completed installation of temporary fill for the installation of the new stone column improved soil outside of the future bulkhead cap beam.
- KIWC began to install king piles along Pier 43 near Sand Island Access Road.
- KIWC continues their work on the concrete landside crane rail beam at section Pour #6. Work included installation of the rebar cages and concrete.

Work Observed at Snug Harbor:

- KIWC began work to install surcharge material. Work includes installation of backfill material into the wick drain holes, import of fill material to raise elevation from (+)7' MLLW to (+)10' MLLW.

Work Observed at PCCP:

- No work observed.

MONTHLY REPORT NO. 030

Period of September 29 – November 2, 2023
Kapalama Container Terminal Wharf and Dredging
Honolulu Harbor, Oahu, Job HC 10498
State of Hawaii, Department of Transportation, Harbors Division
Contract No. 69245

D. AERIAL PHOTOGRAPH



April 2023



July 2023

E. PROJECT PHOTOGRAPHS (See attached Sheets)

H.C. 10498 KAPALAMA CONTAINER TERMINAL YARD WHARF AND DREDGING
MONTHLY REPORT NO. 030
SEPTEMBER 29 TO NOVEMBER 2, 2023



KIWC pouring capping beam pour #3 on pier 42.



KIWC striking off excess concrete from the top mat.



KIWC finishing the surface of capping beam pour #3.



Pier 42: HRSPI crew continued to install the rebar cage for Pour #6 of the CWCB



Pier 42: Water was supplied to the top of the concrete pour for curing purposes of Pour #3 of the CWCB



Pier 42: KIWC carpentry crew continued forming the forms for Pour #1 of the LSCRB

H.C. 10498 KAPALAMA CONTAINER TERMINAL YARD WHARF AND DREDGING
 MONTHLY REPORT NO. 030
 SEPTEMBER 29 TO NOVEMBER 2, 2023



Pier 41: KIWC civil crew continued to chip the mud mat to expose the CIDH pile without concrete cover on the rebars



Pier 42: KIWC civil crew continued excavating the subgrade for the mud mat installation between STA 10+00 to STA 11+00



KIWC loosening formwork around Pier 42 capping beam pour #4.



PCCP: Across Pier 41 - HRSPI continued fabricating the rebar cage for the spread footing of ID#3



KIWC setting formwork for Pier 42 LSCRB pour #1.



KIWC setting formwork for Pier 42 LSCRB pour #1.

H.C. 10498 KAPALAMA CONTAINER TERMINAL YARD WHARF AND DREDGING
MONTHLY REPORT NO. 030
SEPTEMBER 29 TO NOVEMBER 2, 2023



Pier 41: CIDH repair concrete pour at the Deadman extension was cancelled by Micah



Pier 43: KIWC Bridge and Marine crew continued to drive the king piles



Pier 43: KIWC Bridge and Marine crew continued to drive the king piles



KIWC filling snug harbor to EL +10.0.



KIWC setting formwork for LSCRB pour #1 on pier 42.



Pier 43: KIWC Bridge and Marine crew stopped pile driving for today

H.C. 10498 KAPALAMA CONTAINER TERMINAL YARD WHARF AND DREDGING
MONTHLY REPORT NO. 030
SEPTEMBER 29 TO NOVEMBER 2, 2023



Pier 41: P0 Deadman Extension - KIWC civil crew continued forming the forms surrounding the repair for the CIDH



Pier 43: KIWC Bridge and Marine crew continued to drive the king pile by vibratory method



KIWC installing a 1' lift of 3b beneath the tie rod sets in snug harbor.

H.C. 10498 KAPALAMA CONTAINER TERMINAL YARD WHARF AND DREDGING
MONTHLY REPORT NO. 030
SEPTEMBER 29 TO NOVEMBER 2, 2023



Pier 41: KIWC civil crew (Sanu's crew) continued dewatering the CIDH repair prior to pouring concrete on PO Deadman extension



Pier 41: KIWC civil crew (Micah's crew) used a fiber rope soak into a hydrofoam compound to plug the water from the Deadman extension



Pier 41: KIWC crew placing concrete mixed over the CIDH repair on the Deadman extension



Pier 42: Between STA 6+50 and STA 7+50 - KIWC civil crew (Brent's crew) continued to install the tie rod assembly



Pier 41: The Komatsu PC 1250 excavator is down. No dredging work from noon to end of shift today



KIWC installing formwork for capping beam pour #7.

H.C. 10498 KAPALAMA CONTAINER TERMINAL YARD WHARF AND DREDGING
MONTHLY REPORT NO. 030
SEPTEMBER 29 TO NOVEMBER 2, 2023



Pier 42: KIWC carpentry crew (Jesse's) continued to adjust the footing braces for the metal forms of Pour #1 of the LSCRB



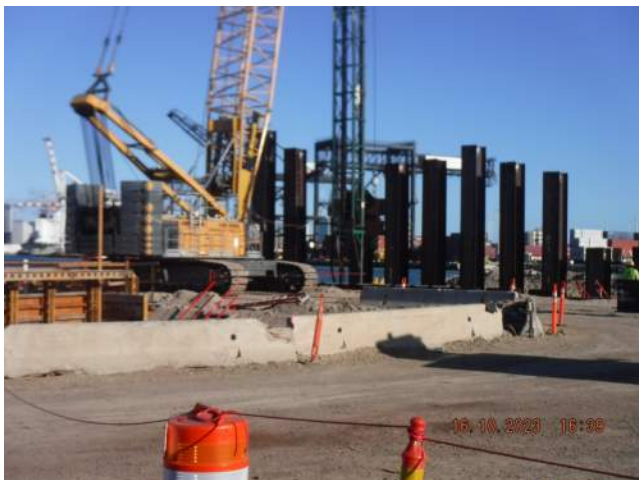
Pier 42: KIWC Bridge and Marine crew continued to lay out and burn holes of the CWCB between STA 12+50 to STA 13+75



Pier 41: KIWC carpentry crew commenced installing the form template for the P0 Deadman section



Pier 41: KIWC crew continued to dredge the ocean bottom between Pour# 3 and #4 of the CWCB



KIWC finished driving king piles on Pier 43



View of fillet weld repair on 4.5" diameter penetration through combi wall.

H.C. 10498 KAPALAMA CONTAINER TERMINAL YARD WHARF AND DREDGING
MONTHLY REPORT NO. 030
SEPTEMBER 29 TO NOVEMBER 2, 2023



Pier 43: KIWC crew continued to backfill and place #3B fine gravel over the tie rod installation



KIWC pumping water out of the king pile void space on P6



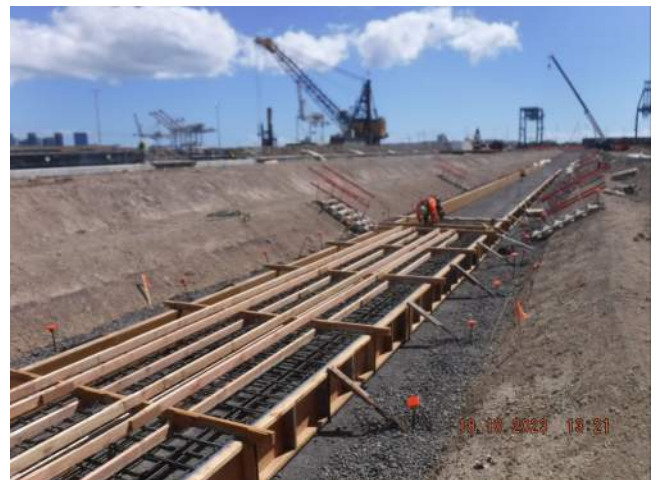
MPE taking cylinders for break testing.



Pier 42: Appearance of the broom finished of the top of the concrete pour for Pour#6 of the CWCB



HRSPI progress installing the reinforcement for P0 of the deadman on Pier 41



KIWC installing formwork for the trench drain Sta. 7+00 to 6+00 on Pier 41

H.C. 10498 KAPALAMA CONTAINER TERMINAL YARD WHARF AND DREDGING
MONTHLY REPORT NO. 030
SEPTEMBER 29 TO NOVEMBER 2, 2023



KIWC performing landside dredging on Pier 41



HRSPI installing reinforcement for the trench drain from Sta. 6+00 to 3+40



KIWC driving sheet piles using the APE vibratory hammer on Pier 43



KIWC extending tie rod trenches towards the combi wall along snug harbor.



KIWC threading sheet piles along the combi wall alignment on pier 43.



KIWC backfilling over tie rods in snug harbor.

H.C. 10498 KAPALAMA CONTAINER TERMINAL YARD WHARF AND DREDGING
MONTHLY REPORT NO. 030
SEPTEMBER 29 TO NOVEMBER 2, 2023



HRSPI installing the grillage for P0 of the deadman on Pier 41



KIWC continued waterside dredging on Pier 41 P4



KIWC backfilling over tie rods between the combi wall and the anchor wall.



KIWC driving sheet piles for the CWCB on Pier 43



KIWC prepping to use the impact hammer to drive the sheet piles to depth on Pier 43



KIWC finished driving all sheet piles on the CWCB

H.C. 10498 KAPALAMA CONTAINER TERMINAL YARD WHARF AND DREDGING
MONTHLY REPORT NO. 030
SEPTEMBER 29 TO NOVEMBER 2, 2023



Pier 43: KIWC carpentry crew (Jesses's crew) resumed removing the chamfer and leaned the inside of the rebar cage.



KIWC removing the chamfers from P1 of the LSCRB on Pier 42 to be used on P6 of the LSCRB on Pier 43



Pier 43: KIWC Bridge and Marine crew continued to drive the double king piles to their final tip elevations



Pier 42: KIWC civil crew (Brent's crew) continued to excavate the subgrade for the installation tie rods between STA 7+00 to STA 7+50



KIWC dredging along the pier 41 capping beam.



KIWC removing formwork from around capping beam pour #3.

H.C. 10498 KAPALAMA CONTAINER TERMINAL YARD WHARF AND DREDGING
MONTHLY REPORT NO. 030
SEPTEMBER 29 TO NOVEMBER 2, 2023



Pier 42: KIWC civil crew continued to excavate the subgrade between STA 12+00 to STA 12+50 for tie rod installation



Pier 43; KIWC Bridge and Marine crew continued maintenance of the pile driving equipment



Pier 42: KIWC civil crew continued to install the tie rod assembly from STA 12+00 to STA 12+50



Pier 43: KIWC Bridge and Marine crew continued to fix the silt curtain under the bridge



Pier 41: Trench Drain 3 - Carpentry crew forming the sides of the trench drain



Pier 43: Sheet pile ID # SP422 separated and was re-vibrated to its final tip elevation

H.C. 10498 KAPALAMA CONTAINER TERMINAL YARD WHARF AND DREDGING
MONTHLY REPORT NO. 030
SEPTEMBER 29 TO NOVEMBER 2, 2023



Pier 43: Bridge and Marine crew containing the silt foam within the confines of the silt curtain



KIWC finishing the surface of LSCRB pour #1.



KIWC continued placing material into Honolulu Harbor at the southwest corner of Pier 43



Pier 43: Stone column causeway - View of the silt foam under the bridge within the confines of the silt curtain at 0721 hours



Pier 43: KIWC carpentry crew continued pre stripping Pour #6 of the LSCRB



Pier 41: KIWC DB Seattle continued in water dredging

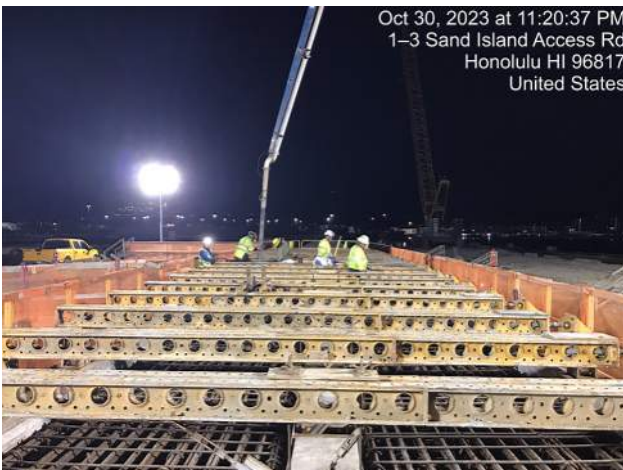
H.C. 10498 KAPALAMA CONTAINER TERMINAL YARD WHARF AND DREDGING
 MONTHLY REPORT NO. 030
 SEPTEMBER 29 TO NOVEMBER 2, 2023



KIWC stockpiling dredged material on pier 41.

LOAD	WEIGHT	PRODUCT CODE	PRODUCT DESCRIPTION	UNIT PRICE	AMOUNT
10.00	10.00	710.00	45PS07775X	5000-3/4 PM P-ASH-30 AH HUK	
00:00	22:34				

First concrete ticket for the P6 LSCRB pour on Pier 43



KIWC starting to pour P6 of the LSCRB on Pier 43



KIWC starting second lift (approximately 40 minute lift timing) for P6 of the LSCRB on Pier 43



Pier 41: Dredged material was dumped on the wst side of the K-rail



KIWC dredging along pier 41.